

Florida State Parks

Monthly Newsletter, October 2007

Inclusive Events October 2007

[St. Andrews State Park](#)
Nature's Gallery Festival
Saturday and Sunday,
October 27 and 28, 10
a.m. - 4 p.m.

[Homosassa Springs
Wildlife State Park](#)
Bird Walk
Saturday, October 27, 8
a.m. - 9:30 a.m. (Meet at
7:45 a.m.)

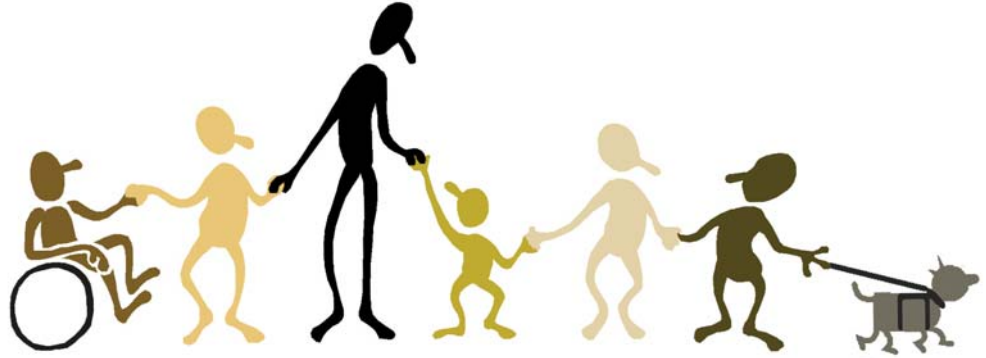
[Silver River State Park](#)
Phantoms in the Forest
Saturday, October 27,
7 p.m.

[Anastasia State Park](#)
Enchanted Forest
Thursday, October 25
and Sunday, October 28,
6 p.m. - 9 p.m.

[Hillsborough River State
Park](#)
A River Runs Through It
Saturday, October 27,
11 a.m. - 5 p.m.

[Fort Zachary Taylor
Historic State Park](#)
Haunting of Fort Taylor
Sunday, October 28, 4
p.m. - 11 p.m.
Monday, October 29
through Wednesday
October 31, 7-11p.m.

Celebrate Disability Awareness



Please join us in celebrating Disability Awareness Month. The Division of Recreation and Parks is committed to making all reasonable efforts to ensure that its facilities, programs and services are accessible to, and usable by, all people, including those with disabilities. For more information about accessible and inclusive elements of state parks click [here](#).

Florida Folk Festival

Join us Veterans Day Weekend, November 9, 10 and 11, for the [55th Annual Florida Folk Festival](#) at [Stephen Foster Folk Culture Center State Park](#). Presented by the Florida Department of Environmental Protection's Division of Recreation and Parks, this popular heritage event brings talent and entertainment to the tranquil banks of the Suwannee River in White Springs, FL. Folk artists will gather for one of the oldest and most revered state folk festivals in America ... [Read more](#)

Featured Performers

Friday	Magda Hiller
The Tony Rice Unit	Willie Green
Bobby Hicks	The Peyton Brothers
Liz Pennock & Dr. Blues	Gabe Valla
Frank Thomas	Sam Pacetti
Blind Willie James	The Aaron O'Rourke Trio



Let's Go  Outside



Upcoming Events in Florida State Parks

PICKIN' IN THE PINES BENEFIT FESTIVAL

Forest Capital Museum State Park

Date: October 5th & 6th, 2007.

Description: Presented by Taylor County Chamber of Commerce, this year's annual October bluegrass festival will donate all proceeds to the *March of Dimes*...bluegrass for babies!

Enjoy two days of the country's finest bluegrass musicians. Bring your lawn chairs and dress for cooler evening temperatures. There will be vendors and limited camping. Pets and alcohol are prohibited. The Entrance Fee is \$10.00 for a week end pass.

Fees: Weekend pass is \$10.00!

Contact: For more information about this event, camping reservations or to pre-order tickets contact Dawn Taylor at 850-584-5366 or email Taylor Chamber.

Directions: 1 mile south of Perry on US 19 - South Alternate 27.

CHILDREN'S CANE POLE FISHING TOURNAMENT

De Leon Springs State Park

Date: October 6, 2007 9:00a.m - 12:00 p.m.

Description: Children 15 and under test their angling skills with the tried and true cane pole. All children must have a parent or adult with them to register. Trophies will be awarded in three different age groups for the largest, the smallest and the most fish caught. Everyone will win something. Bait is provided by the Friends of DeLeon Springs. Come join the fun! The goal is to provide access to the event for people of all abilities. If you have special needs, please contact park staff at 386-985-4212 before your arrival. Accessible parking will be provided throughout the park.'

Fees: Fees waived to participants

Contact: donna.collins@dep.state.fl.us

Directions: Take US Hwy 17 North from Deland for approximately six miles, following the State Park signs. Turn left onto Ponce DeLeon Blvd and you will travel approximately one mile to the entrance to DeLeon Springs State Park.

D.I.P. IN THE PARK

Werner-Boyce Salt Springs State Park

Date: Saturday, October 6 2007 - Tours beginning at 8, 9, 10, and 11AM

Description: Take this opportunity to get a look at one of Pasco's few remaining salt marsh habitats and coastal marshlands in a quiet, back to nature environment. Bring your canoe or kayak and take a 1-hour guided tour through the bayous, over the salt springs itself and through the marshes of the park. Points of interest will be native vegetation, park geology, fish, birds and animals. Groups will be no larger than 10 - 12 watercraft per tour. Sponsored by Salt Springs Alliance Citizens Support Group.

Fees: \$5.00 per craft

Contact: For more information call 727.816.1890

Directions: The park is located in the Port Richey area of Pasco County. At this time only a start-up kit consisting of a small self-composting restroom, small picnic shelter, information kiosk, and one half mile of nature trail is available to the public from the landward side. It can be reached by turning west off of U.S. Hwy. 19 at Cinema Drive. Cinema Drive dead ends at entrance of start-up kit. The main use area of the park is scheduled to begin construction sometime after the first of the new year. That entrance will be just north of Ridge Road in Port Richey.

Upcoming Events in Florida State Parks

BREAST CANCER AWARENESS RIDE

Alafia River State Park

Date: Saturday – October 6, 2007. Registration begins at 8:00 a.m. Ride begins at 9:30 a.m. sharp!

Description: The Triple B Riding Club is sponsoring a Breast Cancer Awareness Horseback Ride at Alafia River State Park. Each participant is asked to collect a minimum of \$30.00 in pledges. For every \$10.00 in pledges, participants will receive raffle tickets to be used towards chances for prizes donated by various equine businesses. Participants who collect a minimum of \$30.00 in pledges will be provided lunch after the ride.

Fees: For additional fee and pledge information, please log on to [Triple B Riders](#)

Contact: Julie Magruder at (813)690-2584.

Directions: From the South - Take I-75 North to exit #240. At exit #240, turn Right (East) onto SR 674. Keep straight on SR 674 for approximately 15 miles. Turn Left (North) at flashing light, onto CR 39 for approximately 5 miles. The main park entrance is on the Right side. From the North - Take I-75 South to exit #246. At exit #246, turn Right (East) onto Big Bend Road. Keep straight on Big Bend Road for approximately 1 mile. Turn Right (South) onto U.S. 301. Keep straight on U.S. 301 for approximately 1.5 miles. Turn Left (East) onto CR 672. Follow CR 672 for approximately 12 miles. Turn Left (North) onto CR 39. Keep straight on CR 39 for approximately 1.5 miles. The main park entrance is on the Right side. From the East - Take I-4 West to exit #22. Turn Left onto Park Road. Follow Park Road for approximately 2.5 miles. Bear right onto 39B. Turn Left onto SR 39 (James Redman Parkway). Continue on SR/CR 39 for approximately 15.2 miles. The main park entrance will be on the Left side.

CANDLELIGHT VIEWING

Fort Clinch State Park

Date: Saturday evening, October 6, 2007.

Description: Self guided viewing of Fort Clinch that take place after sundown.

Fees: Park entrance fee plus \$3.00 per person Fort admission.

Contact: For more information, call 904-277-7274.

Directions: Take I-95 to the Fernandina Beach/Callahan exit (Milepost Exit 373 - Old Exit 129), and stay to the right. You will then be traveling east on A1A. (This road becomes 8th Street within the town limits of Fernandina.) Stay on this road, (A1A), for 16 miles until you come to the intersection of 8th Street and Atlantic Avenue. Turn right on Atlantic Avenue and go about two miles, Fort Clinch State Park will be on the left.

FIRST WEEKEND UNION GARRISONS

Fort Clinch State Park

Date: October 6 & 7, 2007. Saturday 9:00am – 5:00pm and Sunday 9:00am – 12:00pm.

Description: Living historians re-create life at Fort Clinch during the War Between the States. Activities may include black powder artillery demonstrations and marching drills, as well as soldiers and civilians taking up duty in the laundry, infirmary and kitchen. Candlelight viewings on Saturday evenings every First Weekend.

Fees: Park entrance fee plus \$2.00 per person Fort admission.

Contact: For more information, call 904-277-7274.

Directions: Take I-95 to the Fernandina Beach/Callahan exit (Milepost Exit 373 - Old Exit 129), and stay to the right. You will then be traveling east on A1A. (This road becomes 8th Street within the town limits of Fernandina.) Stay on this road, (A1A), for 16 miles until you come to the intersection of 8th Street and Atlantic Avenue. Turn right on Atlantic Avenue and go about two miles, Fort Clinch State Park will be on the left.

Upcoming Events in Florida State Parks

[FIRE AND FOREST FEST](#)

[Jonathan Dickinson State Park](#)

Date: October 6, 10:00 a.m. - 3:00 p.m.

Description: In observance of 'Fire Prevention Week' and 'Forest Awareness Month,' Jonathan Dickinson State Park and the Florida Division of Forestry are co-hosting a free, family event designed to educate the community about the dangers of fire, the importance of prescribed fire and importance of preserving our forests.

The whole family can have fun and learn at the same time through games and hands-on activities. The kids can dress up in fire gear, meet local firefighters and learn the true story of Smokey Bear. You can also sit in our fire equipment and learn all about the Division of Forestry's Helicopter and Tractor-Plow and the park's Brush Trucks. Members of the Florida Park Service District 5 Prescribed Burn Team and others will answer questions.

Fees: Free park entry during event.

Contact: Park Services Specialist Libby Reinert at (561) 745-5551 or by e-mail at

Libby.Reinert@dep.state.fl.us.

Directions: To Jonathan Dickinson State Park from the south

On I-95 - take Exit 87A - go east on Indiantown Road to US 1. Turn left (north) on US 1. Jonathan Dickinson is 5 miles on your left.

On Florida Turnpike - take Exit 116 (Jupiter). Go east on Indiantown Road to US 1. Turn left (north) on US 1. Jonathan Dickinson is 5 miles on your left.

To Jonathan Dickinson State Park from the north

On I-95 - take Exit 96 - go east on Bridge Road to US 1. Turn right (south) on US 1. Jonathan Dickinson is 3 miles on your right.

On Florida Turnpike - take Exit 116 (Jupiter). Go east on Indiantown Road to US 1. Turn left (north) on US 1. Jonathan Dickinson is 5 miles on your left.

[PAYNES PRAIRIE BY BICYCLE](#)

[Paynes Prairie Preserve State Park](#)

Date: Saturday, October 13, 2007. 9:00 a.m.

Description:

About the trail: Passing by native plants and wildlife, scenery, and backyard Florida culture, the old railroad bed turned greenway is both a paved recreational surface and a grassy path for equestrians. As you make your way down the trail on this guided ride, trade your modern life for the days of citrus groves, small railroad towns, and coal burning locomotives. The route stretches back to the days of William Bartram, Seminole Indians, and even Florida's first people. The Gainesville Hawthorne Trail totals 16 miles from Boulware Springs Park in Gainesville to the city of Hawthorne, passing through Paynes Prairie Preserve State Park with various overlooks along the way.

Details: Start at at Boulware Springs Park on SE 15th Street at 9:00 a.m. Ride distance will be about 12 mile, and includes some mild hills. There will be multiple stops along the way, and a restroom facility is available.

Requirements: All riders must provide bicycles. All riders must have and use helmets. No riders under 10 years of age. Ride is limited to 10 participants to ensure a quality experience.

RSVP: Call the Visitor Center between 9:00 a.m. and 4:00 p.m. daily at 352.466.4100

Fees: \$5.00 suggested donation.

Contact: For more information, call 352-466-4100.

Directions: Paynes Prairie Preserve State Park is located 10 miles south of Gainesville, in Micanopy, on the

Upcoming Events in Florida State Parks

east side of US 441.

Coming from the north on I-75: Take exit 374, the Micanopy exit, and turn left at the end of the exit ramp. You will then be traveling east on CR 234. Stay on this road 1.4 miles until it intersects with US 441. Turn left onto 441 and go 0.6 miles to Paynes Prairie Preserve State Park (on the right).

Coming from the south on I-75: Take exit 374, the Micanopy exit, and turn right at the end of the exit ramp. You will then be traveling east on CR 234. Stay on this road 1.4 miles until it intersects with US 441. Turn left onto 441 and go about 0.6 miles to Paynes Prairie Preserve State Park (on the right).

[JOE JENKINS TIME PREDICTION 5K RUN/WALK](#) [Highlands Hammock State Park](#)

Date: Saturday October 13th - 8:00 AM

Description: Featuring mystery T-shirts for all participants. Race proceeds benefit former park ranger Joe Jenkins, who has been diagnosed with Lou Gehrig's disease (ALS). Join us for the 2nd Annual Run/Walk. This 5k event will be run on one of the park trails and will be a **Time Prediction Event**. The top 15 participants who closely predict their completion time either *running or walking* will win awards! Thus, **no speed is necessary**, just a desire to have fun and help out Joe and his family. Of course, *no watches allowed!* There are 3 ways participants can help:

- Race registration fees.
- Participants may do a pledge run/walk with people supporting your efforts to raise funds for the Jenkins family.
- Or, you may be a supporter of the cause with a check in Any Amount made payable to Joe Jenkins.

Entries/donations should be mailed to Chet Brojek, 3310 Par Road, Sebring, Florida, 33872. **All checks payable to Joe Jenkins.** Please list your projected 5k time and T-shirt size if you plan to run or walk. Everyone has an equal chance of winning one of the awards and there will be plenty of post race refreshments.

Fees: Regular pre-race entry is \$15.00 or a race day fee of \$20.00.

Contact: Call Chet Brojek at 863.385.4736

Directions: Highlands Hammock State Park is located off U.S. 27 on SR 634 (also known as Hammock Road), four miles west of Sebring.

[WALK FOR LIFE](#) [Ichetucknee Springs State Park](#)

Date: Saturday, October 13, 2007. 10:00 a.m. until 2:00 p.m.

Description: Meet at the **south** entrance of Ichetucknee Springs State Park to register and participate in the Walk For Life. Lunch will be provided for all participants.

Fees: Park entrance fee may apply.

Contact: For more information contact Catherine Estes, Director, Crossroads Pregnancy Center, 386-497-4978. Sponsored by *Crossroads Pregnancy Center*.

Directions: From the north, take I-75 south to exit 423. Take SR 47 south, turn on CR 238 and follow the park signs. From the south, take I-75 north to exit 399. Take US 441 north to the city of High Springs. Take US 27 north to Ft. White, stay on US 27 north approximately 4 miles to the South Park Entrance.

[DUNNS CREEK OPEN HOUSE AND TRAIL RIDE](#) [Dunns Creek State Park](#)

Upcoming Events in Florida State Parks

Date: Saturday, October 13, 2007 Gates open at 9:00 a.m. and close around 4:00 p.m.

Description: Start your day off with an early morning tour around the park. Listen and learn about the unique history of the park while you ride with a ranger to areas of the park that are not open to the public yet. Discover how the 23 natural communities provide a rich environment for the native plant and animal species. Next, take a walk to Big Cypress through beautiful woodsy terrain. Be amazed as you and a couple of friends climb inside this enormous living Cypress Tree; bring your boots as you will encounter mud. Then continue the fun as you take a boat ride on beautiful Dunns Creek. Relax as you drift on this picturesque creek. This is a wonderful opportunity to view the wildlife that inhabit at the banks of the creek. Bring your own kayaks and enjoy the creek at your own pace. Horse riders bring your horses and proof of negative coggins for the trail ride. Music and entertainment will be provided throughout the day by local entertainers. Food and drinks will be available for purchase at the food tent. This year Antique Cars will be on display along with craft vendors and an all day yard sale. Bring your binoculars, a camera, your family and some friends to join us at Dunns Creek State Park for an old fashion day of fun and merriment.

Fees: Horse riders bring your horses and proof of negative coggins for the trail ride. There is a \$10.00 donation per horse for this ride.

Contact: For more information and directions contact Ravine Gardens State Park (386) 329-3721.

Directions: Blue Pond Picnic and Hiking Area is located on US 17 South, approximately 15 miles south of Palatka, 4 miles south of Satsuma and 5 miles north of Pomona Park.

THINGS THAT GO BUMP IN THE NIGHT

Manatee Springs State Park

Date: Saturday, October 13, 2007. 6:30 p.m.

Description: Meet with Ranger Jones at the Head Spring next to Mortimer the Manatee statue for a most exciting walk. Please bring bug repellent, a good flashlight, water and comfortable shoes. Meet at the waterfront/boardwalk.

Fees: This event is free with regular park admission.

Contact: For more information, call 352-493-6072.

Directions: Manatee Springs State Park is located at the end of S.R. 320, off U.S. 98, six miles west of Chiefland.

OLD TIME DANCE

O'Leno State Park

Date: Sunday, October 14, 2007. 4:00 p.m. until 7:00 p.m.

Description: Learn the steps to Circles, Squares and Contra dances that were all a rage in the mid 1800's when the town of Leno thrived! Dance to live music by the *Flying Turtles String Band* in the 1930's recreation hall on the banks of the Santa Fe River in O'Leno State Park. Located 6 miles north of High Springs on Hwy. 441.

Fees: Regular park admission plus Tickets: \$5.00/adults, \$3.00/child.

Contact: For more information call 386-454-1853.

Directions: O'Leno State Park is located on U.S. 441, six miles north of High Springs.

HILLSBOROUGH RIVER WATERSHED

Hillsborough River State Park

Date: October 16, 2007 - 2:00 to 5:00pm

Description: Southwest Florida Water Management District/Hillsborough River Watershed. This three-hour program will involve presentations on current water issues of concern or interest to citizens, communities and decision-makers. The target audiences for participation will be elected officials, business leaders, town & county administrators, planners, legal and real estate professionals and key players in local action groups

Upcoming Events in Florida State Parks

and environmental NGOs.

The subject matter for each of the programs will focus on local water issues such as: water quality, (nutrient loading, lawn & garden chemical use etc.) maintaining spring & river flows for environmental and aesthetic needs, sources and costs of present & future water supply, contamination prevention strategies (LID etc.), relationship of water availability and development pressures.

The programs will provide insight and information that will help the region's decision-makers understand the relationship between the "natural and renewable" resource base, the impacts and pressures of past, present and future development, and the critical stewardship role of water management professionals. The program will take place in the Recreation Hall/Parking Lot # 3.

Fees: none

Contact: Contact the park at 813.987.6771

Directions: Hillsborough River State Park is located 9 miles north of Tampa and 6 miles south of Zephyrhills on US Highway 301. From I-75, Southbound from Ocala take the SR 54. Exit #279 east to Hwy 301, travel South for 6 miles, and the park will be on your right-hand side. From I-75, Northbound from Tampa take the Fowler Ave. Exit #265 east to Hwy 301, travel North for 9 miles, and the park will be on your left-hand side. From I-4, West bound take Exit 10 go north on CR 579 to US 301, follow the signs and go North 7 miles the park will be on your left-hand side. From I-4, East bound take Exit 7 (be careful of the merges) and go North on US 301 for 14 miles, the park will be on your left-hand side.

[RIVER QUILT SHOW AND SALE](#)

[Stephen Foster Folk Culture Center State Park](#)

Date: 9 a.m. to 5 p.m. Friday and Saturday, October 19 and 20. 9 a.m to 4 p.m. Sunday, October 21.

Description: The 19th Annual Suwannee River Quilt Show and Sale will be held in White Springs. More than 200 quilts will be shown, during the three-day show. The theme for this year's show will be Quilting on the Suwannee-Past, Present and Future and Ed West, author of "Father's Quilts" will be the guest speaker as part of this annual event. Workshops, demonstrations, lectures, antique quilts and door prizes will also be featured.

[Download entry form, instructions and category information](#)

[Download Flyer](#)

Fees: Admission to the quilt show is \$3.00 per person.

Contact: To obtain more information on the Quilt Show or how to enter a quilt in the Suwannee River Quilt Show, call (386) 397-7005.

Directions: Located on U.S. 41 in White Springs. **From I-75 to S.R. 136** (Milepost Exit 439 - Old Exit 84), travel east on S.R. 136 for 3 miles. Turn left on U.S. 41. Park entrance is on the left. **From I-10 to U.S. 41 North** (Milepost Exit 301 - Old Exit 43), travel 9 miles to White Springs. Park entrance is on the left.

[COASTAL CLEAN-UP EVENT](#)

[Lovers Key State Park](#)

Date: Saturday, October 20, 2007 8:00 a.m. – 12:00 p.m.

Description: In celebration of Greenways and Trails month, Lovers Key State Park will host Johnson Engineering, Inc. for the 5th Annual Johnson Engineering Coastal Clean-up Event. Approximately 130 Johnson Engineering employees and their families are expected to volunteer for this event, which will take place throughout the park and include trail trimming, exotic species removal, painting, and litter clean-up. While Johnson Engineering has traditionally provided the manpower for this yearly effort, this year they are additionally sponsoring the event by funding the materials and supplies necessary to complete the projects.

Upcoming Events in Florida State Parks

In the 1970s, the company's founder, Carl E. Johnson, was instrumental in establishing what is now Lovers Key Carl E. Johnson State Park.

Fees: Free for Participants

Contact: For more information call the park at 239-463-4588

Directions: Lovers Key is located at 8700 Estero Blvd., Fort Myers Beach. The park boundaries are Big Carlos Pass and New Pass. We are 10.5 miles west of I75 on exit 116.

MEMBERSHIP DRIVE/SPEAKERS BUREAU

Fort Mose State Historic Site

Date: Saturday, October 20, 2007, 5:00 p.m. - 8:00 p.m.

Description: Enjoy a relaxed evening at the new Ft. Mose Visitor Center highlighted by good food, a keynote speaker, and a silent auction to raise money and awareness for the Fort Mose Historical Society.

Fees: Admission is free and open to the public.

Contact: Contact Anastasia State Park at (904) 461-2033.

Directions: From St. Augustine: From downtown St. Augustine, drive north on A1A. At the carousel (you read it correctly), continue straight north on San Marco. (A1A turns right towards Vilano Beach. Don't go that way.) San Marco merges with Hwy 1. Shortly after the merge, look for a bronze statue on the right and a sign for Fort Mose. Turn right on Saratoga. Saratoga dead ends into Fort Mose picnic area and parking lot. OR: From Hwy 1 in St. Augustine, drive north past Hwy 16. Look for a bronze statue on the right and a sign for Fort Mose. Turn right on Saratoga. Saratoga dead ends into Fort Mose picnic area and parking lot. From Jacksonville: Drive south on Hwy 1. Turn left on Saratoga. (If you pass Hwy 16 you've missed Saratoga.) Saratoga dead ends into Fort Mose picnic area and parking lot.

LAKE LOUISA OBSTACLE TRAIL CHALLENGE

Lake Louisa State Park

Date: Saturday, October 20, 2007 8:00 a.m. - 4:00 p.m.

Description: Sponsored by the Friends of Lake Louisa, this is a one day equestrian event. Horse and rider have to negotiate a series of ten natural and man-made obstacles placed throughout a five mile trail. Awards are given to the riders based on judging. There are three award categories: Adult (18 & over) Junior (13-17) Youth (12 & under). Food, fun & more! All proceeds from this event benefit the Friends of Lake Louisa and will be used for park improvements. The goal of the park and the Friends of Lake Louisa is to provide access to the event for people of all abilities. If you have any special needs please contact the park staff at (352) 394-3969 before your arrival. Accessible parking will be provided throughout the park.

Fees: To be announced.

Contact: Please contact Lake Louisa State Park at (352) 394-3969.

Directions: Lake Louisa State Park is located on US 27, seven (7) miles south of State Road 50.

EVENING CRUISE AND DINNER

Edward Ball Wakulla Springs State Park

Date: Saturday, October 20 6pm

Description: Treat that "someone special" to a romantic cruise on the Wakulla River followed by a splendid dinner served in comfort and charm of the historic Wakulla Springs Lodge.

Fees: \$29.00 Adult, \$18.00 Children 12 and under--Reservations Suggested.

Contact: (850) 224-5950

Directions: Traveling East on I-10 to new Exit 196 (old Exit 28). Take SR-263 (Capitol Circle) South 12 miles. Turn right (South) onto US-319/SR-61 (Crawfordville Hwy) for 2 miles. Bear left onto SR-61 (Wakulla Springs Rd) for 6 miles. Turn left onto SR-267 at flashing stop light. Turn Right into Park entrance. From West I-10 use new Exit 203 (old Exit 30). Take SR-61 (Thomasville Rd) South. Continue on SR-61 thru

Upcoming Events in Florida State Parks

Tallahassee for 10 miles. Take US-319/SR-61 (Crawfordville Hwy) South for 2 miles. Bear left onto SR-61 (Wakulla Springs Rd) for 6 miles. Turn left onto SR-267 at flashing stop light. Turn Right into Park entrance.

15TH ANNUAL HAUNTED WOODS EVENT

Hillsborough River State Park and Fort Foster State Historic Site

Date: October 26 & 27, 2007 - 6 - 10 p.m.

Description: Sponsored by the Hillsborough River State Park Preservation Society this event includes the Haunted Woods Trail, Coloring Contest, and Family Tram Ride (**Tram runs Saturday Night ONLY!**). Refreshments, Games, Goodies, and Moonwalk will also be available for an additional fee. There will be a Costume Contest both nights. All ages - 6:00 pm - Prizes! It is a safe alternative to Trick-Or-Treating! Bring the whole family and come walk through our Haunted Woods for a scary, fun time. **Special Notice: Fort Foster Historic Site Tours are cancelled (10/27 Saturday– 10/28 Sunday of this event)**

Fees: Ages 6 and up \$5.00/each. Ages 5 and under Free!

Contact: Call the park for more details 813.987.6771

Directions: All Visitors to Fort Foster must enter through Hillsborough River State Park first. Hillsborough River State Park is located 9 miles north of Tampa and 6 miles south of Zephyrhills on US Highway 301. From I-75, South bound from Ocala take the SR 54. Exit #279 east to Hwy 301, travel South for 6 miles, and the park will be on your right-hand side. From I-75, North bound from Tampa take the Fowler Ave. Exit #265 east to Hwy 301, travel North for 9 miles, and the park will be on your left-hand side. From I-4, West bound take Exit 10 go north on C.R. 579 to US 301, follow the signs and go North 7 miles the park will be on your left-hand side. From I-4, East bound take Exit 7 (be careful of the merges) and go North on US 301 for 14 miles, the park will be on your left-hand side.

HAUNTED HAYRIDE

Anastasia State Park

Date: October 26 & 27, 2007, 7:00 p.m. - 10:00 p.m.

Description: The Friends of Anastasia State Park are hosting their annual Haunted Hayride. Scary thrills await the unwitting who dare to enter the haunted forest. For the faint of heart we have the Enchanted Forest, a scare-free walking loop filled with magical fairytale scenes, music and sparkling lights, fun activities, and programs.

Fees: Admission is \$7.00 per person.

Contact: Contact Anastasia State Park at (904) 461-2033.

Directions: **From I-95** take exit 311 (old 94). Go east on State Road 207. Turn right on State Road 312. Turn left on A1A. Travel approx. 1.5 miles north to main park entrance. (Turn right after The Surf Station.)

From US-1 turn east onto State Road 312. Turn north (left) on A1A. Travel approx 1.5 miles north to main park entrance. (Turn right after The Surf Station.)

BARNACLE UNDER MOONLIGHT - OUTTA D'BLUES

The Barnacle Historic State Park

Date: October 26, 6 - 9:00 PM

Description: Bring a picnic, bring your friends and come enjoy a lovely evening concert under the moonlight at The Barnacle. A typical evening with Outta d' Blues has been described as a musical history lesson in the blues—from its acoustic roots beginnings to the current rock-blues connection. No Pets.

www.outtadblues.com

Fees: \$5.00 - 10 years and older

Contact: (305) 442-6866

Upcoming Events in Florida State Parks

Directions: The Barnacle is located in Coconut Grove (Miami) at 3485 Main Highway.

POPS IN THE GARDENS

Alfred B. Maclay Gardens State Park

Date: Sunday, October 21st from 4 pm to 9pm

Description: This is an annual event at Maclay Gardens and the 10th anniversary of Pops in the Gardens. The Tallahassee Symphony Orchestra will be performing on the front lawn of the Maclay House followed by spectacular fireworks over Lake Hall. Guests may bring picnic dinners, beverages, lawn chairs and quilts to spread on the grass or they may purchase tables with or without catered food. The gates will open at 4 p.m. and the music will start at 7 p.m.

Fees: The park will be closed at 3 p.m. and reopen at 4 p.m. for ticketed entry to the event.

Contact: (850) 487-4115

Directions: Maclay State Gardens is located one half mile north of I-10 on U.S. 319.

HERITAGE DAY

Forest Capital Museum State Park

Date: Friday, October 26, 2007. 9 a.m. until 2:00 p.m.

Description: **Heritage Day** commemorates and honors the early settlers of Florida. Celebrate with us as volunteers in period costumes demonstrate a living history of life as it once was on the Cracker Homestead in the late 1800s. Enjoy the living history, storytelling, arts and crafts, and much more. Activities and demonstrations include: A Petting Zoo, J.T. Davis - Sons Of The Confederate Veterans And The "History Of Taylor County In The Civil War", Stone Carver, Splitting Rails, Palm Weaving, The Madison Rangers - Civil War Soldiers' Encampment, Loader And Skitter Demonstration, Butch Harrison The Florida Cracker, Mike And Linda Poindexter - 1860 Mercantile And Kettle Corn, Gourd Demonstration, Barbara W. Silagi - Spinning And Tatting, Quilting, Home Schooled Students Will perform the living history in the Cracker House, and there will be **Storytelling In The Pines. Scary Stories** Everyone is invited to the Cracker Homestead October 26, 2007 Friday night from **7:30 p.m. - 9:30 p.m.** to hear **Scary Stories** by storytellers. Bring lawn chairs and dress for cooler October evening temperatures.

Fees: Heritage Day admission is \$1.00. **Admission is Free to Scary Stories.**

Contact: For more information, call 850-584-3227.

Directions: 1 mile south of Perry on US 19 - South Alternate 27.

HALLOWEEN IN THE WOODS 2007, 'SWAMP MAGIC'

Werner-Boyce Salt Springs State Park

Date: October 26th and 27th from 6pm to 10pm

Description: Werner-Boyce Salt Springs State Park and the Salt Springs Alliance presents Halloween in the Woods 2007, 'Swamp Magic'. A special event designed to be a safe alternative for kids from going door-to-door at Halloween. Fun for all ages. Haunted trails, horse-drawn hayrides, games, food, and more. The event location is on Salt Springs Road just behind Sears at the Gulfview Square Mall, Port Richey. Parking is free. For anyone with a special needs request or for more information please contact the park.

Fees: Admission is \$2.00 adults and \$1.00 children under 12.

Contact: (727) 816-1890

Directions: The park is located in the Port Richey area of Pasco County. At this time only a start-up kit consisting of a small self-composting restroom, small picnic shelter, information kiosk, and one half mile of nature trail is available to the public from the landward side. It can be reached by turning west off of U.S. Hwy. 19 at Cinema Drive. Cinema Drive dead ends at entrance of start-up kit. The main use area of the park is scheduled to begin construction sometime after the first of the new year. That entrance will be just north

Upcoming Events in Florida State Parks

of Ridge Road in Port Richey.

HALLOWEEN HAYRIDE

Topsail Hill Preserve State Park

Date: Friday, October 26th and 27th from 6:30 p.m. to 10:00 p.m.

Description: Enjoy a spooky hayride through the haunted tram path of Topsail Hill, which is approximately 2 miles round trip. Many types of goblins, spooks, and other denizens of the dark are said to roam the woodlands during these two evening. Young children will be able to go through a 'scare-free' walking loop with treats, fun games with prizes, and face-painting. Old-time scary movies will be shown, and packaged food and drinks will be sold. This event will serve as a benefit for the non-profit 'Friends of Topsail Hill' volunteer organization.

Fees: Entrance fee will be waiver for this event.

Contact: (850)267-0299

Directions: Located in Santa Rosa Beach 10 miles east of Destin, FL. Take Interstate 10 to Exit 85 (Defuniak Springs) and follow U.S. Highway 331 south. Travel 27 miles to U.S. Highway 98. Turn right and travel approximately 5 miles west to scenic Highway 30A. Turn left and go ¼ mile to the entrance on the right.

10TH ANNUAL HALLOWEEN IN THE PARK

Honeymoon Island State Park

Date: Friday, October 26 and Saturday, October 27th from 6-10 PM

Description: A safe alternative to trick or treating sponsored by the Florida Park Service and Friends of the Island Parks. There is a Scary Trail for older children and a Not-So-Scary area for younger ones. Enjoy games, food and fun and get into the spirit of Halloween in the park! Bring your costume (not required), a flashlight and bug spray!

Fees: \$10.00 per car up to 8 people includes 10 free game tickets.

Contact: Call the park at (727)469-5942 for more info.

Directions: Honeymoon Island State Park is located at the extreme west end of S.R.586, north of Dunedin. From I-75 (north of Tampa): I-75 south to I-275 south towards Tampa. Follow I-275 south to Hillsborough Ave west (SR-580). Take SR 580 west to SR-586 fork then left. Follow SR-586 into park. From I-75 (south of Tampa): I-75 north to I-4. I-4 to I-275 north. I-275 to Hillsborough Ave west (SR-580). SR-580 west to SR-586 fork then left. Follow SR-586 west into park.

HAUNTED TRAM RIDES

Homosassa Springs Wildlife State Park

Date: October 26 & 27. 6:00 p.m. until 11:00 p.m.

Description: Haunted tram rides down Pepper Creek Trail featuring spooky scenarios, Haunted House for younger children, Halloween Costume Contests for Children, refreshments, souvenirs, clowns and face painting, child identification program by Sheriff's Department.

Fees: Tram rides: Adults - \$5.00, Children \$3.00. Haunted House: \$1.00 per person.

Contact: For more information, call 352-628-5343.

Directions: Homosassa Springs Wildlife State Park is located in Homosassa Springs, 75 miles north of Tampa on U.S. 19 and 90 miles northwest of Orlando.

52ND ANNUAL FLORIDA FOREST FESTIVAL

Forest Capital Museum State Park

Date: Saturday, October 27, 2007.

Description: *WORLD'S LARGEST **FREE** FISH FRY.* * Live Lumberjack Shows * Live Entertainment *
* Arts & Crafts * Food Vendors * Art Show * Heritage Village * Antique Car Show * Equipment

Upcoming Events in Florida State Parks

Demonstrations * Much, Much More! *

Fees: This event is FREE.

Contact: For more information, call 850-584-3227.

Directions: 1 mile south of Perry on US 19 - South Alternate 27.

[WEKIVA FALL FEST](#)

[Wekiwa Springs State Park](#)

Date: October 27, 2007, 9:00 a.m. - 3:00 p.m.

Description: Exhibitors and vendors from the Central Florida area will be on hand to provide activities and information for the public promoting Florida's natural and cultural heritage. There will also be a pumpkin patch for folks to pick out their Halloween pumpkin and a jack-o-lantern pumpkin painting contest for kids. A fun family event that everyone will enjoy.

Fees: Regular park entry, \$5.00 per vehicle

Contact: Contact park at (407) 884-2008.

Directions: Wekiwa Springs State Park is approximately 20 minutes North of Orlando and approximately 45 minutes North of the attractions. It is easily located off Interstate 4 at exit 94. Take State Road 434 West to Wekiwa Springs Road. Turn right on Wekiwa Springs Rd. and travel approximately 4 miles to the park entrance which will be on the right. Please call the park if additional directions are needed.

[HALLOWEEN FUN DAY AT THE PARK](#)

[Suwannee River State Park](#)

Date: Saturday, October 27, 2007. 10:00 a.m. until 3:00 p.m.

Description: Bring out the family for a Halloween Fun Day overlooking the Historic Suwannee River. Activities include a pumpkin decorating contest and a costume contest for people, dogs, and cats. Bobbing for apples is always a fun activity, as well as our popular candy corn race. Take a Halloween Tram Ride and don't forget to go "trick or treating" at the Ranger Shack. Prizes will be awarded for first and second place. This event is being brought to you by the Friends of Suwannee River State Park.

Fees: The park entrance fee is \$4.00 per vehicle (up to 8 people per vehicle).

Contact: For more information please email [The Friends of Suwannee River State Park](#) or call the park at (386) 362-2746.

Directions: Suwannee River State Park is located 13 miles west of Live Oak, off U.S. 90.

[LAKE GRIFFIN SPOOK-TACULAR](#)

[Lake Griffin State Park](#)

Date: 10/27/2007 6 p.m. - 10 p.m.

Description: Are you ready for a spookin' good time? Join us for a fun family night and a safe alternative to traditional trick or treating! In the spirit of Autumn and Halloween, Lake Griffin will be hosting a variety of entertainment including a costume contest, games, face painting, movies, refreshments, music, a kid-friendly trick or treat trail, costumed characters, scavenger hunt, and a chilling atmosphere for the whole family! For the brave ghouls, take a stroll along our Trail of Terror. This fundraiser event is sponsored by the local community, Lake Griffin State Park, and the Friends of Florida State Parks, Inc. Call the park for more information, movie times, and fees. Please remember this is a family event and all costumes should be tasteful.

Fees: \$1.00 per person for event admission. Game and activity tickets will be available for \$.25 each or 5 for \$1.00.

Contact: kadie.ogden@dep.state.fl.us

Directions: Lake Griffin State Park is located 2 miles north of Leesburg and 30 miles south of Ocala. The park is also within an hour of central Florida's major attractions.

Upcoming Events in Florida State Parks

6TH ANNUAL HAUNTED HALLOWEEN

Oleta River State Park

Date: October 27, 7 - 10:00 PM

Description: Sponsored by the Oleta River Adventure Association, this annual event promises the whole family a gruesome good time! We'll have a 'haunted forest,' hay ride and night ride through the mountain bike trails (you provide your own lights). You're sure to find some ghosts, goblins and other spooky creatures along the way!

Fees: Event fee - \$3.00 per person

Contact: (305) 919-1846

Directions: Oleta River State Park is located at 3400 N.E. 163rd St, off I-95 in Miami.

PHANTOMS IN THE FOREST

Silver River State Park

Date: October 27, 2007 7:00 pm

Description: Come join the Friends of Silver River State Park and the Ocali Storytelling Guild for an evening of spooky storytelling. This is the third year for this fun, family event. Refreshments will be available for sale. Park entry fee is waived; event entry is by donation only.

Fees: donation requested

Contact: deborah.wilson@dep.state.fl.us

Directions: Silver River State Park is located east of Ocala, 1 mile south of S.R. 40 on S.R. 35. From Interstate 75, take exit 352 onto SR 40 east, about 9 miles to SR 35. From Interstate 95 take exit 268 to Route 40 west, about 60 miles to SR 35.

Animal Signs

Fort George Island Cultural State Park

Date: Sunday, October 28, 2007. 11:00 a.m.

Description: Curious about animal tracks and what made them? Join Park Ranger Eric for a presentation and leisurely guided hike through different Florida ecosystems on a quest to characterize tracks left by an assortment of critters. This program will take place at the Ribault Club on Fort George Island. No reservations are necessary.

Fees: This program is FREE!

Contact: For more information, call 904-251-2320.

Directions: Fort George Island Cultural State Park lies approximately 16 miles east of downtown Jacksonville on S.R. A1A, or three miles south of Little Talbot Island State Park.

BREAKFAST WITH A RANGER

Manatee Springs State Park

Date: Sunday, October 28th, 2007. 9:00 a.m.

Description: Enjoy having Breakfast with a Ranger while learning important things about our park, wildlife and environment. Breakfast specials can be purchased at the Café for \$2.00. Meet at the Manatee Springs Cafe.

Fees: This event is free with regular park admission.

Contact: For more information, call 352-493-6072.

Directions: Manatee Springs State Park is located at the end of S.R. 320, off U.S. 98, six miles west of Chiefland.

Upcoming Events in Florida State Parks

HAUNTING OF FT. TAYLOR

Fort Zachary Taylor Historic State Park

Date: Oct. 28, 4:00 PM - 11:00 PM

Oct. 29-31, 7:00 PM - 11:00 PM

Description: The old gun rooms of historic Fort Taylor are turned into a maze full of 'things that go bump in the night,' for the annual Haunting of Ft. Taylor. Scenes will depict documented hauntings of Key West and Fort Zachary Taylor.

Fees: October 28: Park admission fee. Kids 10 and under receive free admission to event from 4-6 PM
October 29-31: \$12/adults, \$10/military, \$8/kids between ages of 5-10, kids 5 and under are free.

Contact: (305) 292-6713

Directions: Fort Zachary Taylor is located at the end of Southard Street on Truman Annex in Key West.

FLORIDA STATE CHAMPIONSHIP SERIES #5

Alafia River State Park

Date: Sunday – October 28, 2007

Description: One off-road mountain bike race in a series of 8 that will be held on Alafia River State Park's exceptional trails.

Fees: Park entry fees still apply. For additional fee information please log on to www.goneriding.com

Contact: For information log on to www.goneriding.com

Directions: From the South - Take I-75 North to exit #240. At exit #240, turn Right (East) onto SR 674. Keep straight on SR 674 for approximately 15 miles. Turn Left (North) at flashing light, onto CR 39 for approximately 5 miles. The main park entrance is on the Right side. From the North - Take I-75 South to exit #246. At exit #246, turn Right (East) onto Big Bend Road. Keep straight on Big Bend Road for approximately 1 mile. Turn Right (South) onto U.S. 301. Keep straight on U.S. 301 for approximately 1.5 miles. Turn Left (East) onto CR 672. Follow CR 672 for approximately 12 miles. Turn Left (North) onto CR 39. Keep straight on CR 39 for approximately 1.5 miles. The main park entrance is on the Right side. From the East - Take I-4 West to exit #22. Turn Left onto Park Road. Follow Park Road for approximately 2.5 miles. Bear right onto 39B. Turn Left onto SR 39 (James Redman Parkway). Continue on SR/CR 39 for approximately 15.2 miles. The main park entrance will be on the Left side.

ANIMAL SIGNS

Little Talbot Island State Park

Date: Sunday, October 28, 2007. 11:00 a.m.

Description: Curious about animal tracks and what made them? Join Park Ranger Eric for a presentation and leisurely guided hike through different Florida ecosystems on a quest to characterize tracks left by an assortment of critters. This program will take place at the Ribault Club on Fort George Island. No reservations are necessary.

Fees: This program is FREE!

Contact: For more information, call 904-251-2320.

Directions: Take I-95 to Heckscher Drive (Milepost Exit 358A - Old Exit 124A) and then travel east for 17 miles.

ENCHANTED FOREST

Anastasia State Park

Date: October 25th & 28th, from 6:00 p.m. until 9:00 p.m.

Description: The Friends of Anastasia State Park are hosting their annual Enchanted Forest, a scare-free walking loop filled with magical fairytale scenes, music and sparkling lights, great for young children and light

Upcoming Events in Florida State Parks

hearted adults. This event is held at the St. Augustine Amphitheater (located 1 mile north of SR 312 on A1A). Proceeds benefit the Friends of Anastasia State Park.

Fees: \$4.00 per person

Contact: Contact Anastasia State Park at (904) 461-2033.

Directions: From I-95 take exit 311 (old 94). Go east on State Road 207. Turn right on State Road 312. Turn left on A1A. Travel approx. 1.5 miles north to main park entrance. (Turn right after The Surf Station.)

From US-1 turn east onto State Road 312. Turn north (left) on A1A. Travel approx 1.5 miles north to main park entrance. (Turn right after The Surf Station.)

Upcoming Events in Florida State Parks
