

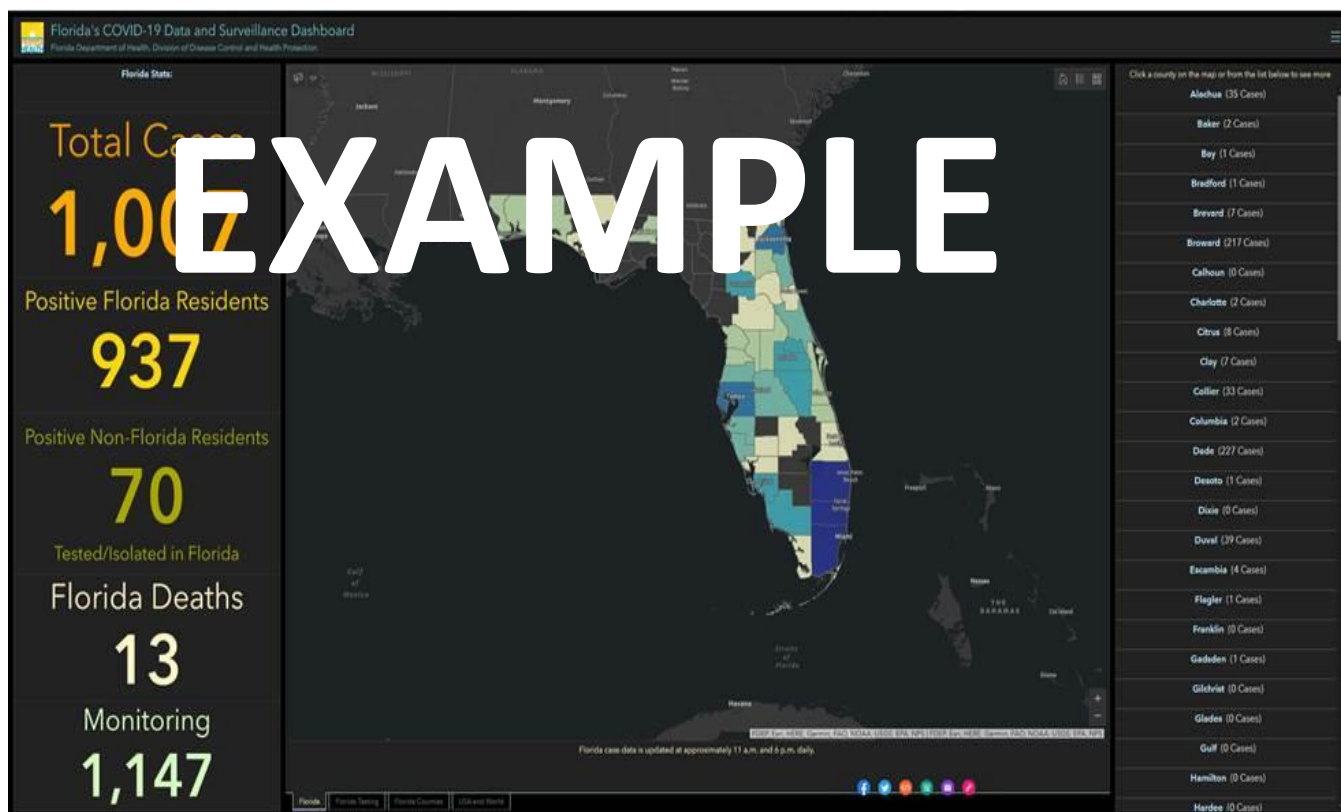
March 23, 2020

**Please share this reference document as needed.**

- [Click here](#) if you would like to be added to the distribution list to receive future updates.
- We expect to send out new updates each Monday afternoon, or as new resources become available.
- This document will be saved on the GIO web site. [FloridaGIO.GOV](http://FloridaGIO.GOV)
- This resource will not contain vendor-specific links. Please contact your vendors for any resources they may be providing for the geospatial community's COVID-19 response.

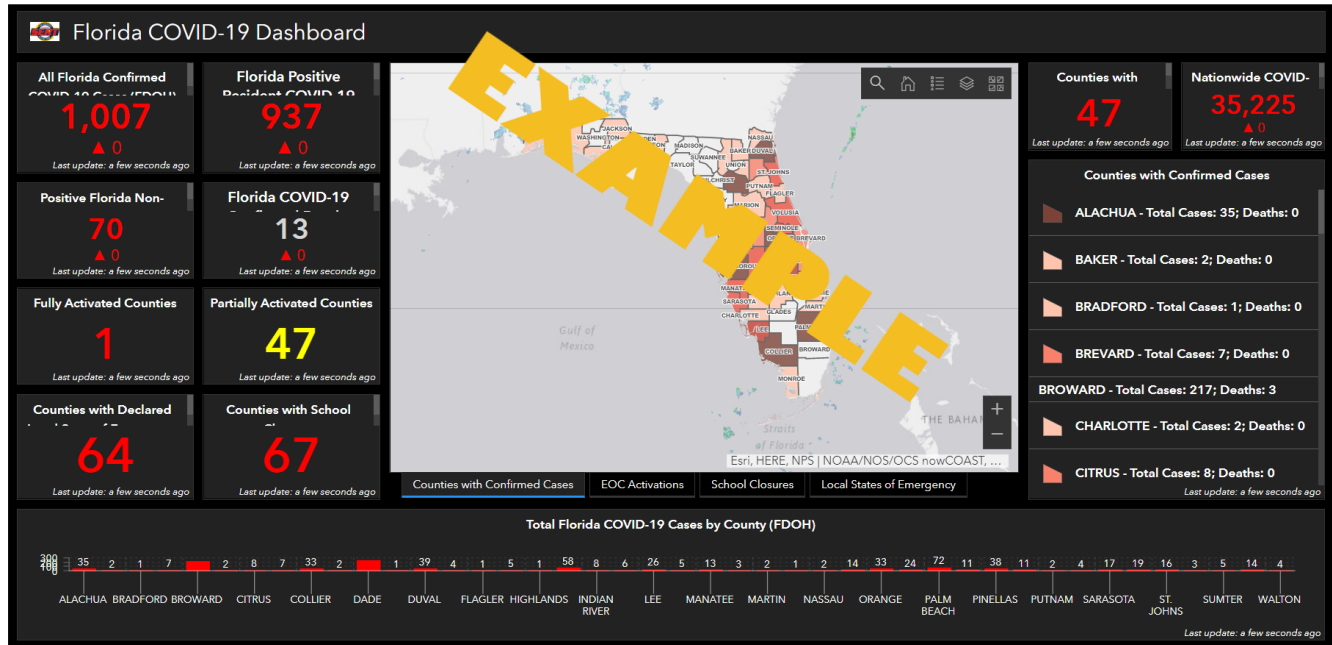
### FDOH

1. <https://floridahealthcovid19.gov/>
2. [Dashboard](#)



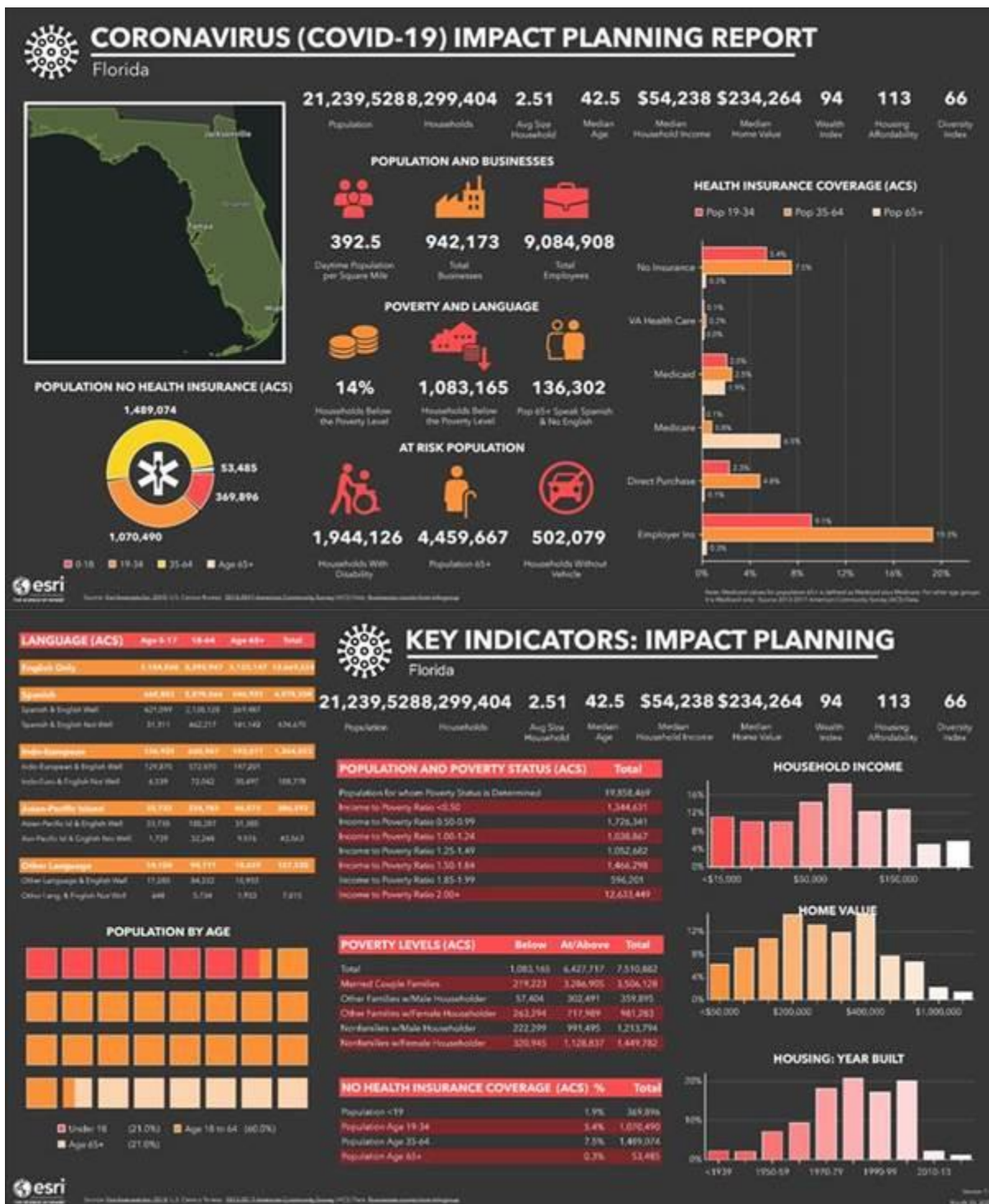
### From FDEM:

1. FDEM Florida COVID-19 Dashboard - <https://arcg.is/0jPnWW>



2. FDEM COVID-19 Info Page - <https://www.floridadisaster.org/covid19>
3. Florida COVID-19 Planning Reports – <https://maps.floridadisaster.org/covid19/>  
For additional planning products to help support your response to COVID-19, FDEM GIS has created Statewide and individual County planning report infographics that include information on demographics, at risk populations counts, poverty and language counts/percentages, health care insurance coverage counts, business/employee counts, and additional economic key indicators. This data is sourced from [Esri](#) forecasts for 2019, , information from the [2013-2017 American Community Survey](#) (ACS), and Businesses counts from [Infogroup](#). Each State and County includes a report in both a PDF and HTML file. The HTML file provides the ability to interact with the report to drill down on additional information contained within each element of the report.

*Sample Planning Report: (next page)*





## Covid-19 Florida Geospatial Resources

### **FDACS**

<https://fdacs.gov/covid19>

### **FDOT**

<https://www.fdot.gov/agencyresources/emergency.shtm>

### **FDEP**

[All State Parks closing 3/23/20](#)

### **South Florida WMD Response**

<https://www.sfwmd.gov/content/sfwmds-response-covid-19>

### **Southwest Florida WMD Response**

<https://www.swfwmd.state.fl.us/about/covid-19-update>

### **St Johns River WMD Response**

<https://www.sjrwmd.com/>

### **Suwannee River WMD Response**

<http://www.mysuwanneeriver.com/CivicAlerts.aspx?AID=714>

### **Northwest Florida WMD Response**

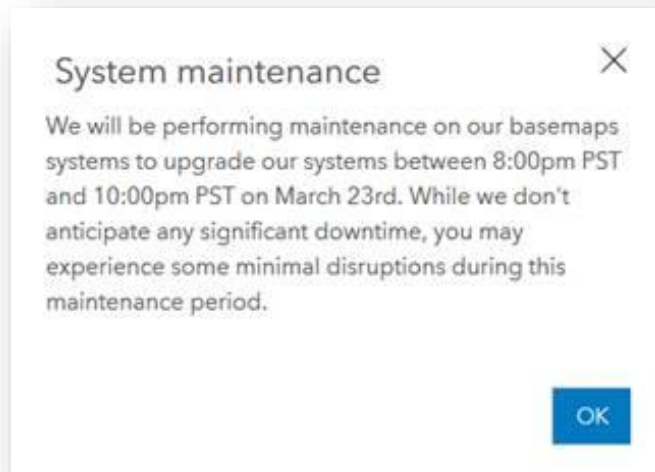
<https://www.nwfwater.com/Contact-Us/Newsroom/Press-Releases/COVID-19-update-District-to-close-reservation-campsites-developed-recreation-areas>

### **Events:**

<https://www.floridagio.gov/pages/florida-gis-community>

If you wish to share updates on the status of your GIS Community events, Please [e-mail](#)  
FloridaGIO@FloridaDEP.GOV

### For ESRI Users:



**A multi-state reference** including Alabama and Georgia, from the National States Geographic Information Council (NSGIC): [Interactive Map](#)

### COVID-19 STATE-LEVEL GEOSPATIAL RESOURCES

Use the interactive map below to access publicly available state-level GIS viewers and dashboards made available to support COVID-19 response. Additional state-level resources will be added to this map as they become available.

