

April 06, 2020

All content that has been added since the last version will have a green highlight within each section.

Please share this reference document as needed.

- [Click here](#) if you would like to be added to the distribution list to receive future updates.
- We expect to send out new updates each Monday afternoon, or as new resources become available.
- This document will be saved on the GIO web site. [FloridaGIO.GOV](https://floridagio.gov)
- This resource will not contain vendor-specific links. Please contact your vendors for any resources they may be providing for the geospatial community's COVID-19 response.

FDOH: A note from Rebekah Jones, DOH GIS Manager:

Here's the "approved" text we send out to data users inquiring about using the data, and the appropriate links:
Accessing county and case-line level data:

The Florida Department of Health publishes two feature services that are available for public use. These two layers are the only official and authoritative data counts published by the Department of Health.

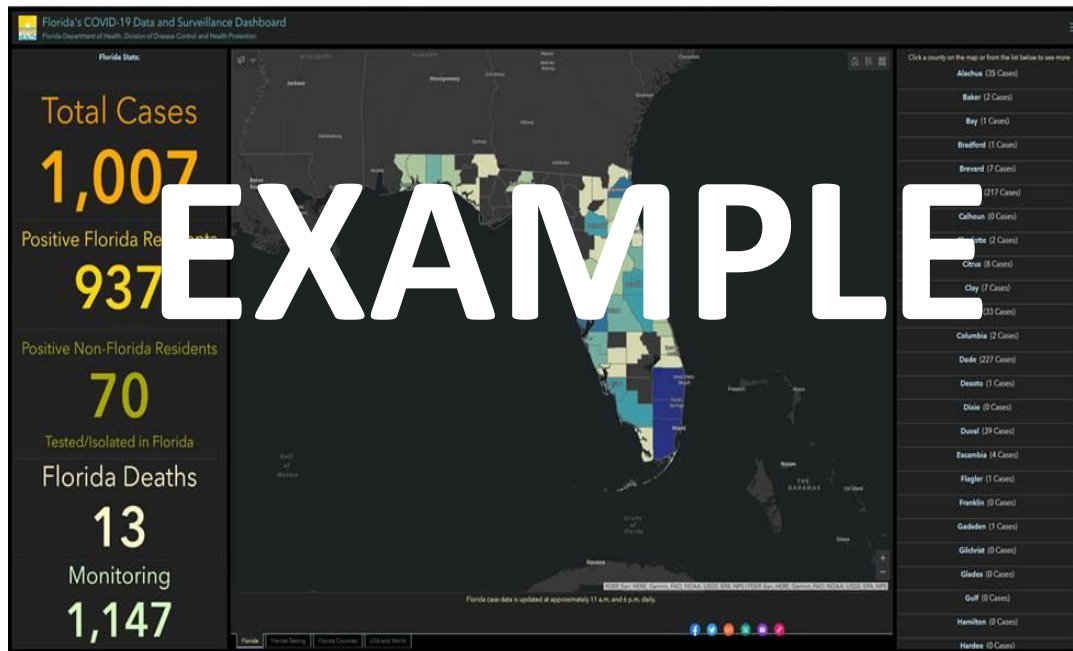
1. The case-line data for Florida can be accessed as a hosted table:
https://services1.arcgis.com/CY1LXxl9zlJeBuRZ/arcgis/rest/services/Florida_COVID19_Case_Line_Data/FeatureServer
 - a. About page: <https://fdoh.maps.arcgis.com/home/item.html?id=f5d69a918fb747019734d9a90cd602f4#overview>
2. The map feature service layer can be accessed here:
<https://fdoh.maps.arcgis.com/home/item.html?id=a7887f1940b34bf5a02c6f7f27a5cb2c>
 - a. About page: <https://fdoh.maps.arcgis.com/home/item.html?id=a7887f1940b34bf5a02c6f7f27a5cb2c>

We ask that you use the short link to our application built in Experience Builder, as we've configured it to auto-detect the type of device used to access the data, and re-route the user to the appropriate dashboard layout based on the user's device. The short link is: <https://arcg.is/0Hfi5O>

Additionally, you can create a scaled version of our application to embed into your own native environment by clicking the "◁" embed code at the bottom of the dashboard (in experience builder – desktop only).

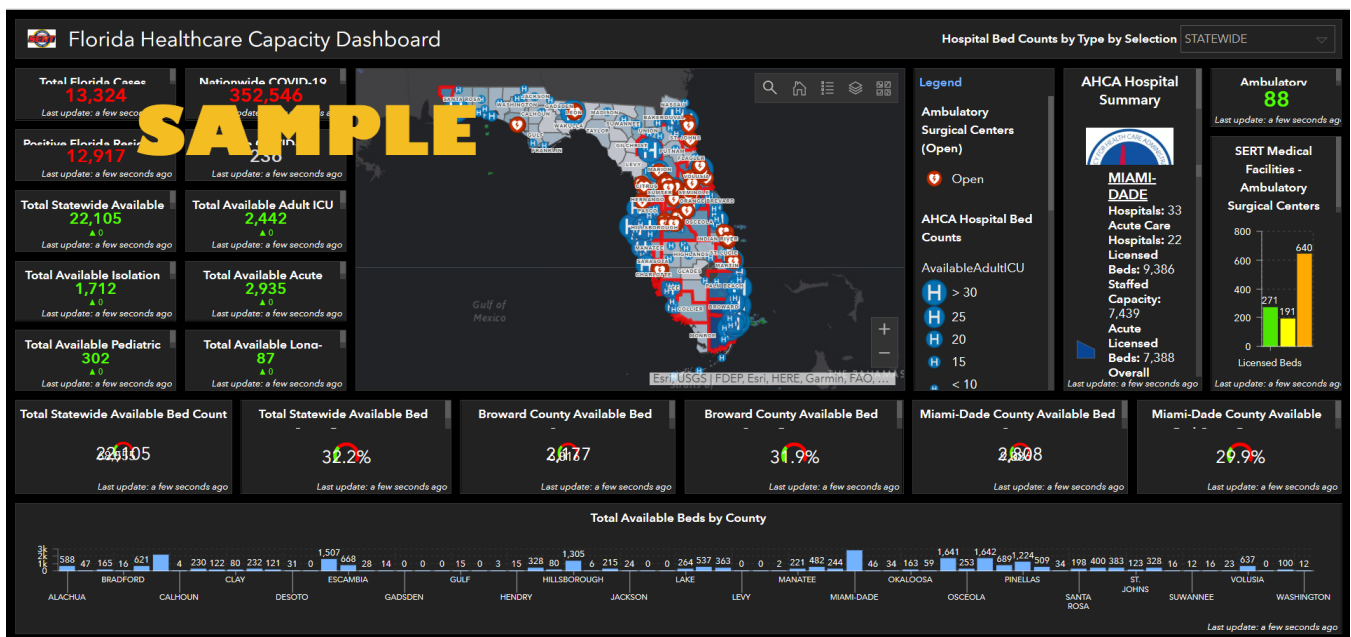
Please credit the Florida Department of Health - GIS Office with any representation of the map or dashboard.

1. Landing page: <https://floridahealthcovid19.gov/>
2. [Dashboard \(see next page for example\)](#)



From FDEM:

1. Florida Healthcare Capacity Dashboard - <https://arcg.is/4m5e9>

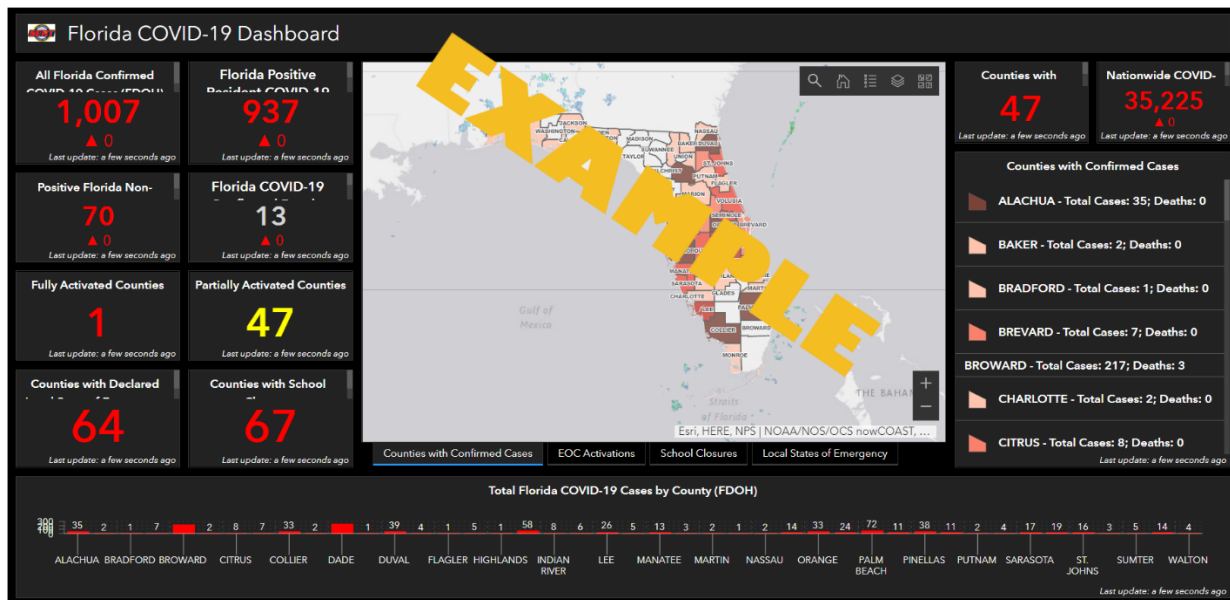


2. ESRI CHIME Model v. 1.1.1 -

<https://www.arcgis.com/home/item.html?id=37ad6eb0d1034cd58844314a9b305de2>

3. ESRI CHIME Model Introduction Video - <https://www.youtube.com/watch?v=hMa5XPCDD0E>

4. FDEM Florida COVID-19 Dashboard - <https://arcg.is/0jPnWW>

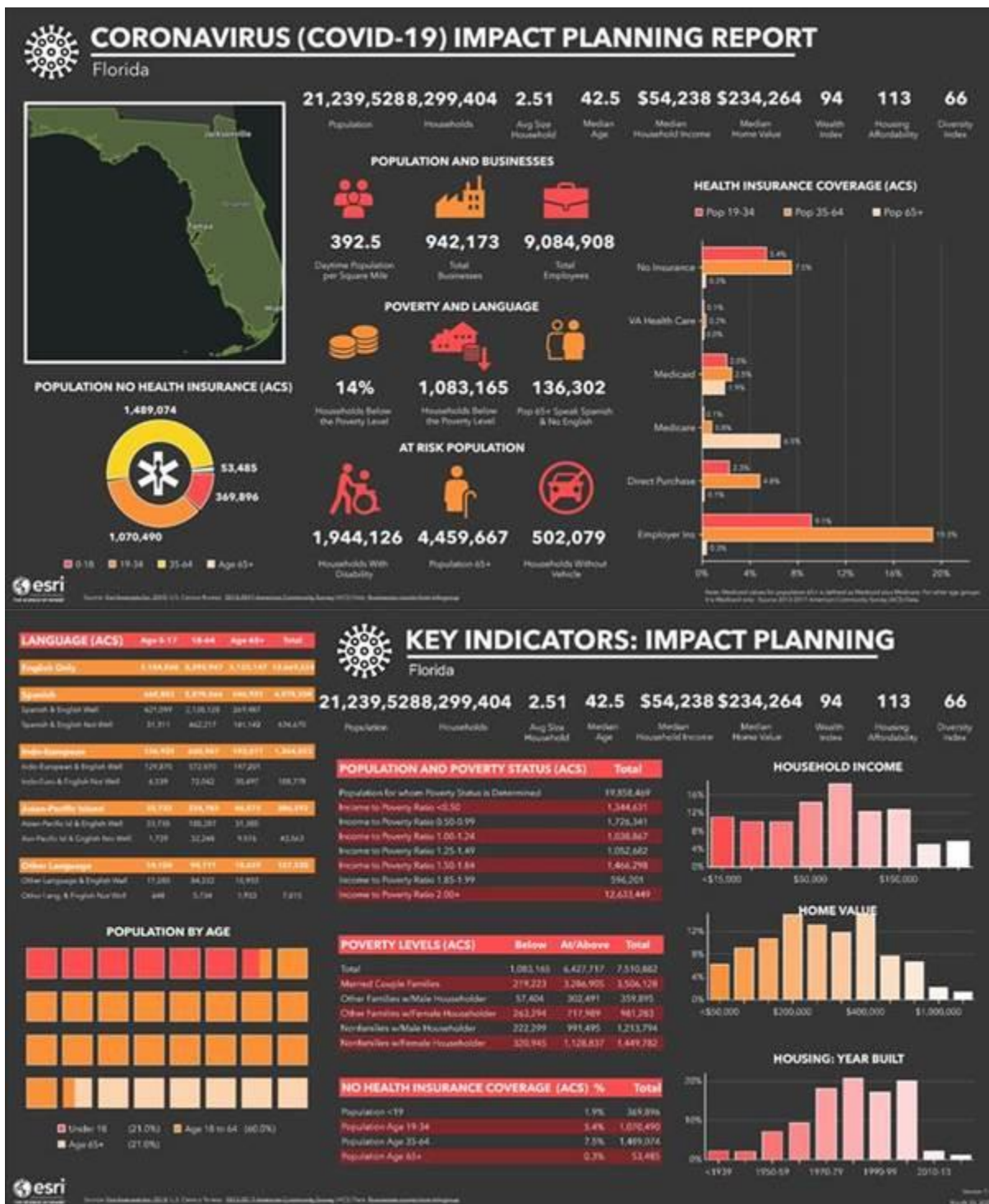


5. FDEM COVID-19 Info Page - <https://www.floridadisaster.org/covid19>

6. Florida COVID-19 Planning Reports – <https://maps.floridadisaster.org/covid19/>

For additional planning products to help support your response to COVID-19, FDEM GIS has created Statewide and individual County planning report infographics that include information on demographics, at risk populations counts, poverty and language counts/percentages, health care insurance coverage counts, business/employee counts, and additional economic key indicators. This data is sourced from [Esri](#) forecasts for 2019, information from the [2013-2017 American Community Survey](#) (ACS), and Businesses counts from [Infogroup](#). Each State and County includes a report in both a PDF and HTML file. The HTML file provides the ability to interact with the report to drill down on additional information contained within each element of the report.

Sample Planning Report: (next page)


21,239,528
2,299,404
2.51
42.5
\$54,238
\$234,264
94
113
66
Population
Households
Avg Size Household
Median Age
Median Household Income
Median Home Value
Wealth Index
Housing Affordability
Diversity Index

POPULATION AND POVERTY STATUS (ACS)

Income to Poverty Ratio	Total
Population for whom Poverty Status is Determined	19,858,489
Income to Poverty Ratio <0.50	1,344,631
Income to Poverty Ratio 0.50-0.99	1,726,341
Income to Poverty Ratio 1.00-1.24	1,638,867
Income to Poverty Ratio 1.25-1.49	1,052,682
Income to Poverty Ratio 1.50-1.84	1,464,298
Income to Poverty Ratio 1.85-1.99	594,204
Income to Poverty Ratio 2.00+	12,633,449

POVERTY LEVELS (ACS)

Category	Below	At/Above	Total
Total	1,083,165	6,427,717	7,510,882
Married Couple Families	218,223	3,284,905	3,503,128
Other Families w/ Male Householder	57,404	302,491	359,895
Other Families w/ Female Householder	263,294	717,589	980,883
Nonfamilies w/ Male Householder	222,299	991,495	1,213,794
Nonfamilies w/ Female Householder	320,945	1,128,837	1,449,782

NO HEALTH INSURANCE COVERAGE (ACS) %

Category	%	Total
Population <19	1.9%	349,896
Population Age 19-34	5.4%	1,070,490
Population Age 35-64	7.0%	1,489,074
Population Age 65+	8.2%	53,485

HOUSEHOLD INCOME

HOME VALUE

HOUSING: YEAR BUILT



Covid-19 Florida Geospatial Resources

FDACS

<https://fdacs.gov/covid19>

FDOT

<https://www.fdot.gov/agencyresources/emergency.shtm>

FDEP

[All State Parks closing 3/23/20](#)

South Florida WMD Response

<https://www.sfwmd.gov/> (updated URL)

Southwest Florida WMD Response

<https://www.swfwmd.state.fl.us/about/covid-19-update>

St Johns River WMD Response

<https://www.sjrwmd.com/>

Suwannee River WMD Response

<http://www.mysuwanneeriver.com/CivicAlerts.aspx?AID=714>

Northwest Florida WMD Response

<https://www.nwfwater.com/Contact-Us/Newsroom/Press-Releases/COVID-19-update-District-to-close-reservation-campsites-developed-recreation-areas>

Events:

<https://www.floridagio.gov/pages/florida-gis-community>

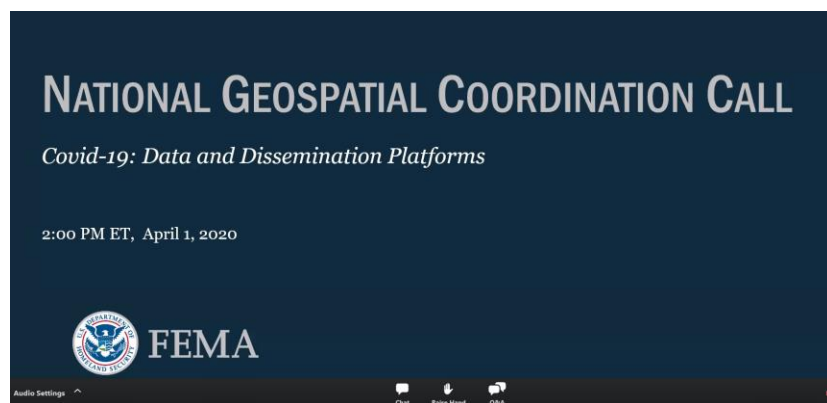
If you wish to share updates on the status of your GIS Community events, please [e-mail](mailto:FloridaGIO@FloridaDEP.GOV)
FloridaGIO@FloridaDEP.GOV

For ESRI Users:

- If any support is needed related to COVID-19, go through the ESRI Disaster Response Program:
<https://www.esri.com/en-us/disaster-response/overview>

State Geographic Information Office

FDOH, FDEM, and the GIO are participating in FEMA / CDC Geospatial briefings to coordinate Federal and State efforts. Please e-mail the GIO with any specific requests or questions. Thank you.

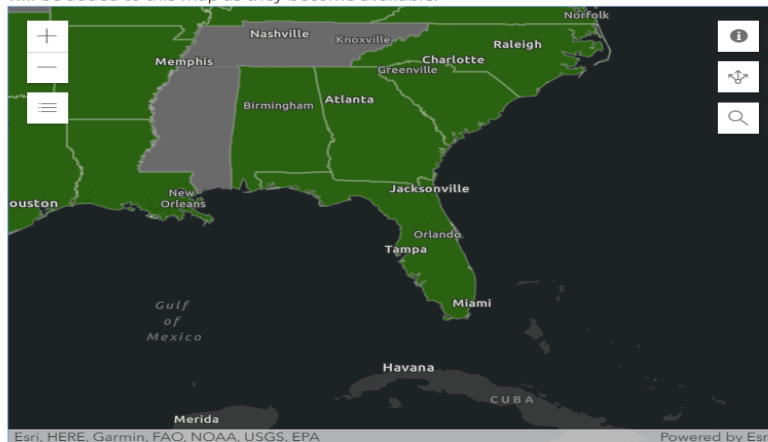


A multi-state reference

- including Alabama and Georgia, from the National States Geographic Information Council (NSGIC):
[Interactive Map](#)

COVID-19 STATE-LEVEL GEOSPATIAL RESOURCES

Use the interactive map below to access publicly available state-level GIS viewers and dashboards made available to support COVID-19 response. Additional state-level resources will be added to this map as they become available.





Covid-19 Florida Geospatial Resources