



Covid-19 Florida Geospatial Resources

April 13, 2020

All content that has been added since the last version will have a green highlight within each section.

Please share this reference document as needed.

- [Click here](#) if you would like to be added to the distribution list to receive future updates.
- We expect to send out new updates each Monday afternoon, or as new resources become available.
- This document will be saved on the GIO web site. FloridaGIO.GOV
- This resource will not contain vendor-specific links. Please contact your vendors for any resources they may be providing for the geospatial community's COVID-19 response.

FDOH: Update from Rebekah Jones, DOH GIS Manager:

Hello COVID-19 Data Users. You've probably noticed recent issues/trouble with a few of our layers since we went live with zip codes last weekend. We ***think*** we've resolved those issues. Please do not hesitate to let me know if anything seems off/wrong. We WANT this to be useable, accessible and accurate information. We're nearly to the point of automation, and if even a single field is not updating properly, it could cause a cascade of errors so we'd rather catch it sooner rather than later. We've made some changes to our schema and our service layers that you may want to note.

1. Previous Zip code data/layers were removed and substituted with two new files.

I know, this is the worst thing to do. We tried to avoid it, but we needed a completely new shapefile for our zip codes layer to account for the break-up of multi-county zips, and to include out-of-state, missing, unknown and PO Box zip codes in our hosted table. We added some elements to the data to make up for it, though.

We replaced the previous zip code layer (map) file with this one:

https://services1.arcgis.com/CY1LXxl9z1eBuRZ/arcgis/rest/services/COVID_19_Cases_in_Florida_by_Zip_Code/FeatureServer

The same masking process applies. Counties with fewer than 5 cases have all zip codes masked. Zip codes with fewer than 10 cases in counties with more than 5 total cases are grouped into "<5" and "5-9."

And the hosted table with this one:

https://services1.arcgis.com/CY1LXxl9z1eBuRZ/arcgis/rest/services/Hosted_Feature_Table_for_Florida_Zip_Code_Cases_of_COVID19/FeatureServer

2. Cases by day, by county available as hosted table: If you didn't already have access to our table of new cases by day and by county (the count field is called "FREQUENCY"), the link is below.

https://services1.arcgis.com/CY1LXxl9z1eBuRZ/arcgis/rest/services/Florida_COVID_19_Cases_by_Day_or_Time_Series/FeatureServer

2. Schema changes and new data added to the Florida Cases (county) data layers.

I tried to avoid changing the actual field names for some of these so as not to break your models, but there were some changes in calculations, definitions, etc. that you should be aware of. I also changed the Alias fields to reflect these changes.

*Denotes a new field that we've added.

** Denotes a field we may be adding in the coming days/week.

Item name:	Previous definition	Updated definition
PUIAgeAvrg	Average age of all PUIs, including cases	Median age of all PUIs, including cases, regardless of testing status. <i>(did not change field name, but did change how it is calculated)</i>
C_AgeAvrg	Average age of all cases	Median age of all confirmed-positive persons (cases) only. <i>(did not change field name, but did change how it is calculated)</i>
PUILab_Yes	Vague	This field should be used in place of "Total tests" going forward. "TTTotal" and T_Total" includes pending/awaiting testing figures (all PUIs regardless if they've had a test done and/or have results pending). PUILab_Yes is the total sum of all persons who have test results.
C_NonResDeaths	Sum of all non-resident deaths in Florida	This field has been removed. It was never being tracked as all deaths of non-residents are repatriated to their resident state per CDC standard.
T_total	Total Tests	All persons who have test results on file or have been identified for priority testing through BPHL.
*C_HospYes_Res	--	Inpatient hospitalizations of confirmed-positive Florida residents only.
*C_HospYes_NonRes	--	Inpatient hospitalizations of confirmed-positive non-Florida residents only.
* C_EDYes_Res	--	Emergency Dept Admissions for Florida Residents Only
* C_EDYes_NonRes	--	Emergency Dept Admissions for Non-Florida Residents
**Race	--	<i>TBD: Likely White, Black, Other, and unknown, as currently listed in the daily report.</i>
**Ethnicity	--	<i>TBD: Likely Hispanic, Not-Hispanic, and unknown, as currently listed in the daily report.</i>

3. Answers to some of your questions.

Q: Will you be adding race/ethnicity data to your dashboard? Probably. We're still working out *where* to put it on the dashboard and *how* to display that data. It is currently available with each evening's report, so I expect we'll be pushing it out with our data services in the near future. That will not be added to the case line data nor the zip code data, but will be added to the county-level data.

Q: What about hospitalization dates/discharges? We don't have that information and likely won't be getting it. There are currently 17,968 people with this virus and nearly 2,500 have been hospitalized at some point. That's a lot of cases to track down and get active/previous hospitalization information about, while still working on new cases.

Q: What about recovery data? We added a chart to the dashboard that is now filtered to new cases over the last 30 days. The "all time" cases is parked behind it. This is as close as we'll be getting to "active cases" anytime soon, as far as I am aware. Please do not mistake this for "recovery," however, because not all of those people with cases older than 30 days are recovered. Some of them may still be sick, hospitalized, suffer permanent disability or be dead.

Q: What about death date data? Working on this one. It would likely have to be something added to the new time-series table (deaths by day, by county), and not to the case data, to protect the private health information of those who have died due to Coronavirus. Stay tuned on this (and no, we can't add "hospitalizations" by date, by county, because the date we learned of a hospitalization isn't necessarily the date the person was admitted to a hospital).

Q: Are you going to add more information to the zip code data, like gender/race/age/hospitalizations/etc.? Not anytime soon.

I've attached the updated Data Definitions pdf, which includes links to all new/updated service layers, revised data schema, etc.

Special note to University research partners: Please email [Nikole Kikuchi](mailto:Nikole.Kikuchi) about data agreements for accessing Merlin data for research.

[Rebekah Jones](#), GIS Manager
Florida Department of Health
Division of Disease Control and Health Protection
O: 850-245-4389 E: Rebekah.Jones@FLHealth.gov

Here’s the “approved” text we send out to data users inquiring about using the data, and the appropriate links:
Accessing county and case-line level data:

The Florida Department of Health publishes two feature services that are available for public use. These two layers are the only official and authoritative data counts published by the Department of Health.

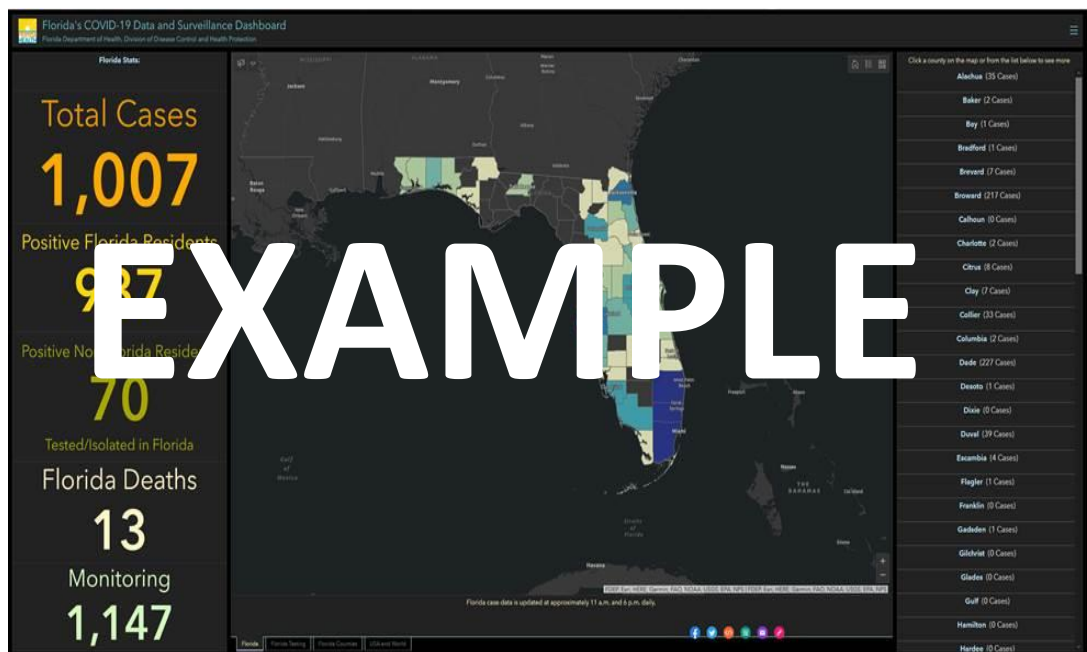
1. The case-line data for Florida can be accessed as a hosted table:
 - https://services1.arcgis.com/CY1LXxl9zLJeBuRZ/arcgis/rest/services/Florida_COVID19_Case_Line_Data/FeatureServer
 - a. About page: <https://fdoh.maps.arcgis.com/home/item.html?id=f5d69a918fb747019734d9a90cd602f4#overview>
2. The map feature service layer can be accessed here:
 - <https://fdoh.maps.arcgis.com/home/item.html?id=a7887f1940b34bf5a02c6f7f27a5cb2c>
 - a. About page: <https://fdoh.maps.arcgis.com/home/item.html?id=a7887f1940b34bf5a02c6f7f27a5cb2c>

We ask that you use the short link to our application built in Experience Builder, as we’ve configured it to auto-detect the type of device used to access the data, and re-route the user to the appropriate dashboard layout based on the user’s device. The short link is: <https://arcg.is/0Hfi5O>

Additionally, you can create a scaled version of our application to embed into your own native environment by clicking the “<>” embed code at the bottom of the dashboard (in experience builder – desktop only).

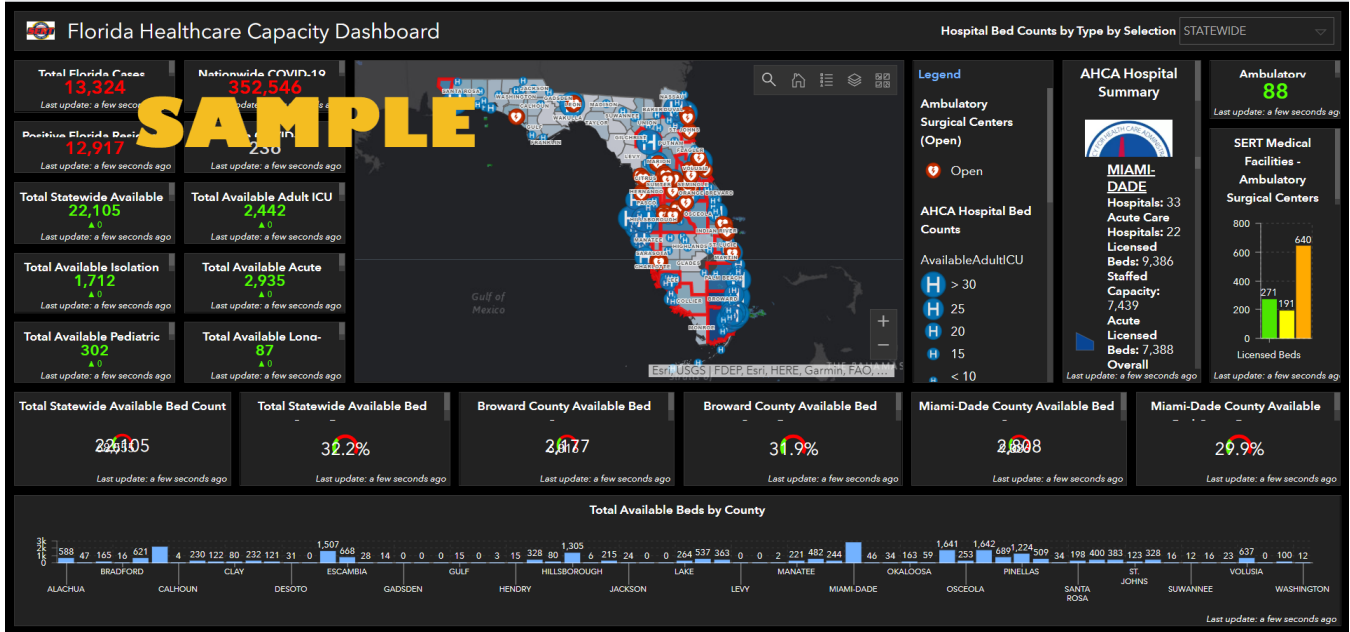
Please credit the Florida Department of Health - GIS Office with any representation of the map or dashboard.

1. Landing page: <https://floridahealthcovid19.gov/>
2. [Dashboard](#)

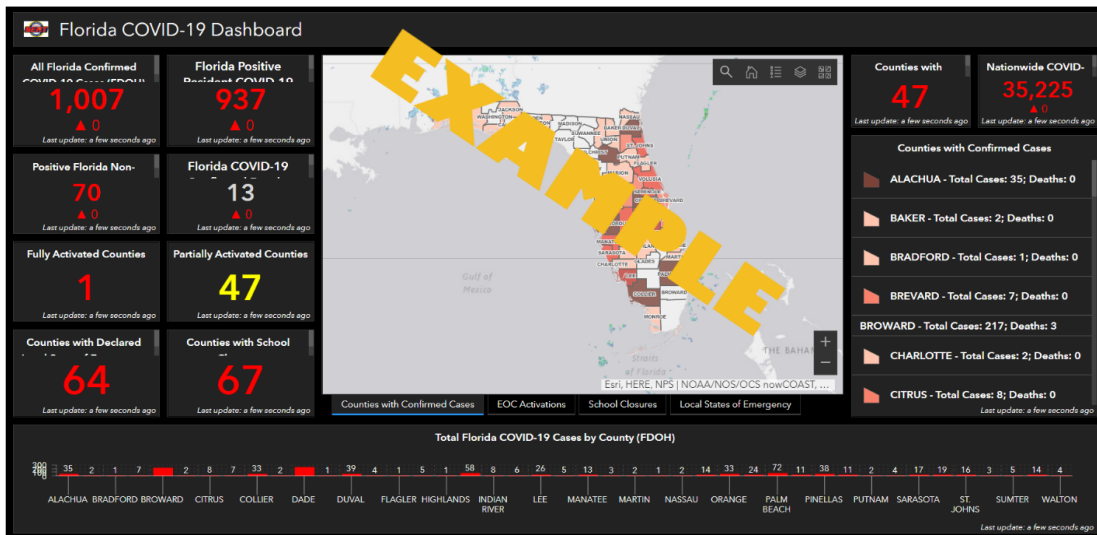


From FDEM:

1. Florida Healthcare Capacity Dashboard - <https://arcg.is/1zn9e9>



1. ESRI CHIME Model v. 1.1.1.1 - <https://www.arcgis.com/home/item.html?id=37ad6eb0d1034cd58844314a9b305de2>
2. ESRI CHIME Model Introduction Video - <https://www.youtube.com/watch?v=hMa5XPCjDDE>
3. FDEM Florida COVID-19 Dashboard - <https://arcg.is/0jPnWW>

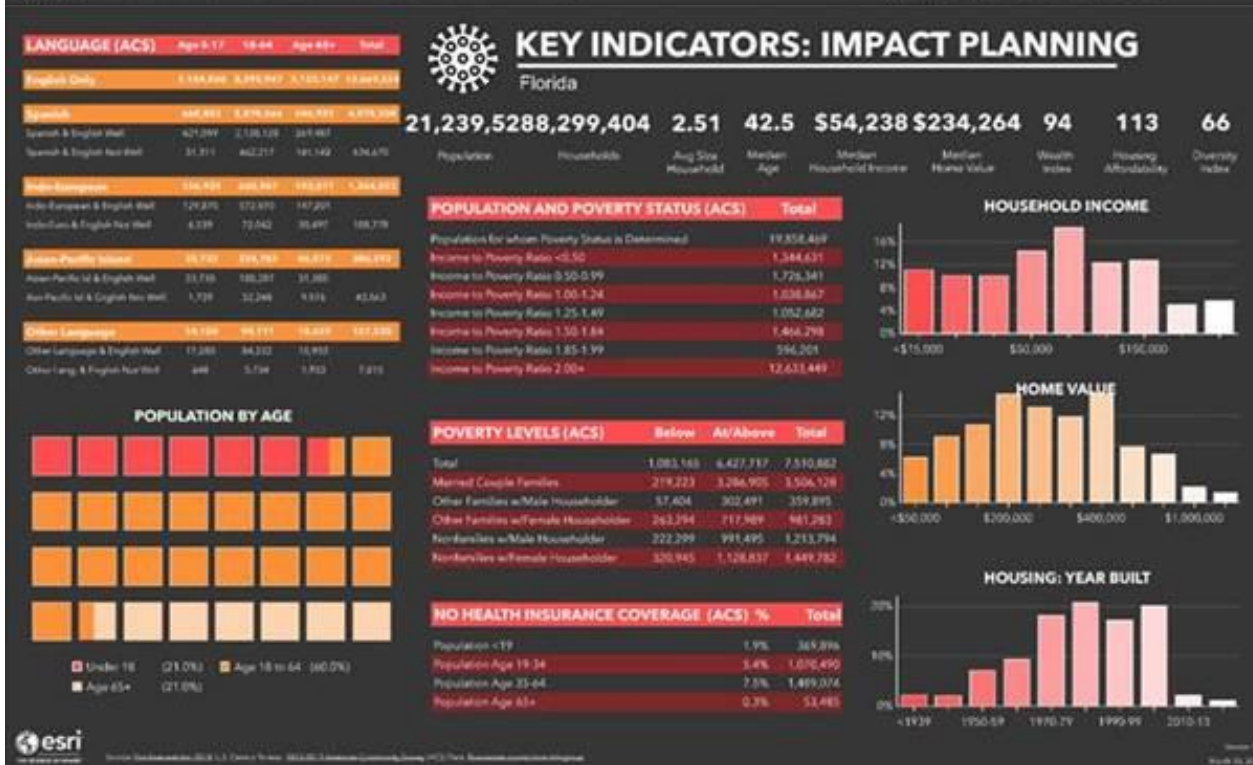
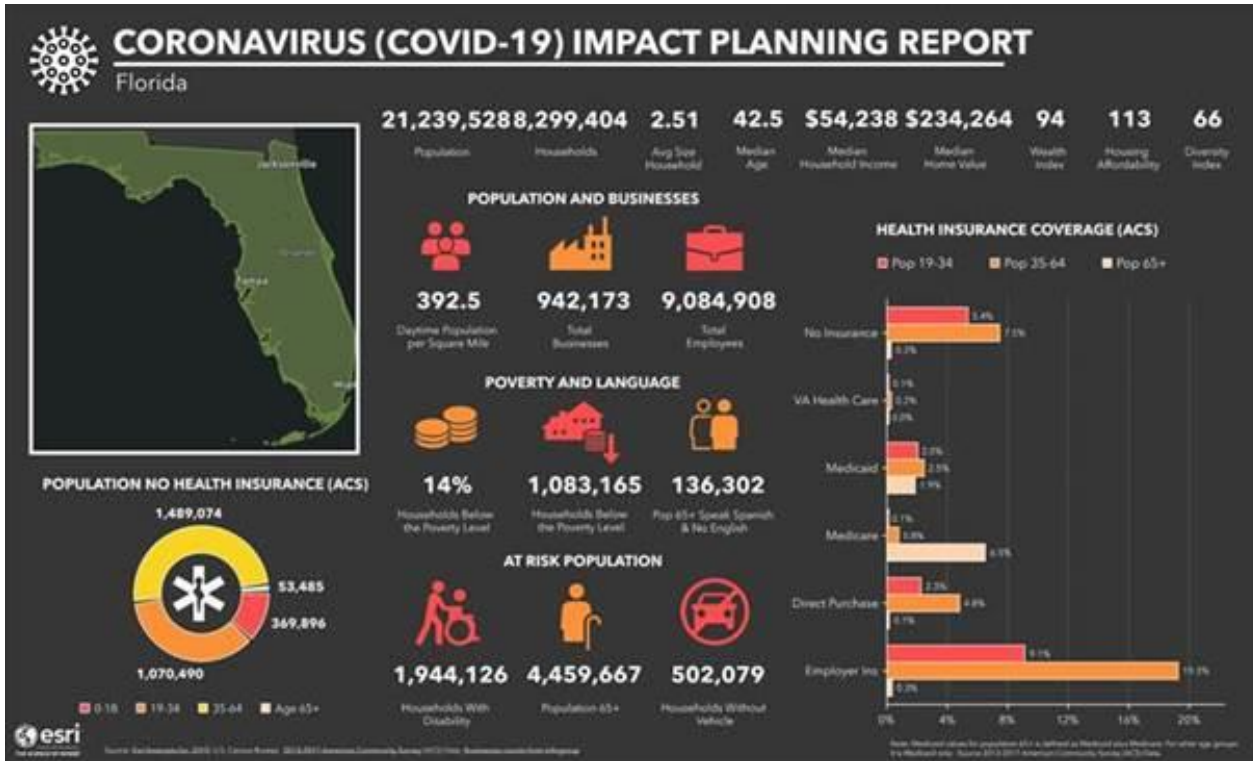




Covid-19 Florida Geospatial Resources

4. FDEM COVID-19 Info Page - <https://www.floridadisaster.org/covid19>
5. Florida COVID-19 Planning Reports – <https://maps.floridadisaster.org/covid19/>
For additional planning products to help support your response to COVID-19, FDEM GIS has created Statewide and individual County planning report infographics that include information on demographics, at risk populations counts, poverty and language counts/percentages, health care insurance coverage counts, business/employee counts, and additional economic key indicators. This data is sourced from [Esri](#) forecasts for 2019, , information from the [2013-2017 American Community Survey](#) (ACS), and Businesses counts from [Infogroup](#). Each State and County includes a report in both a PDF and HTML file. The HTML file provides the ability to interact with the report to drill down on additional information contained within each element of the report.

Sample Planning Report: (next page)





Covid-19 Florida Geospatial Resources

FDACS

<https://fdacs.gov/covid19>

FDOT

<https://www.fdot.gov/agencyresources/emergency.shtm>

FDEP

[All State Parks closing 3/23/20](#)

South Florida WMD Response

<https://www.sfwmd.gov/> (updated URL)

Southwest Florida WMD Response

<https://www.swfwmd.state.fl.us/about/covid-19-update>

St Johns River WMD Response

<https://www.sjrwm.com/>

Suwannee River WMD Response

<http://www.mysuwanneeriver.com/CivicAlerts.aspx?AID=714>

Northwest Florida WMD Response

<https://www.nwfwater.com/Contact-Us/Newsroom/Press-Releases/COVID-19-update-District-to-close-reservation-campsites-developed-recreation-areas>

Events:

<https://www.floridagio.gov/pages/florida-gis-community>

If you wish to share updates on the status of your GIS Community events, please [e-mail](mailto:FloridaGIO@FloridaDEP.GOV) FloridaGIO@FloridaDEP.GOV



Covid-19 Florida Geospatial Resources

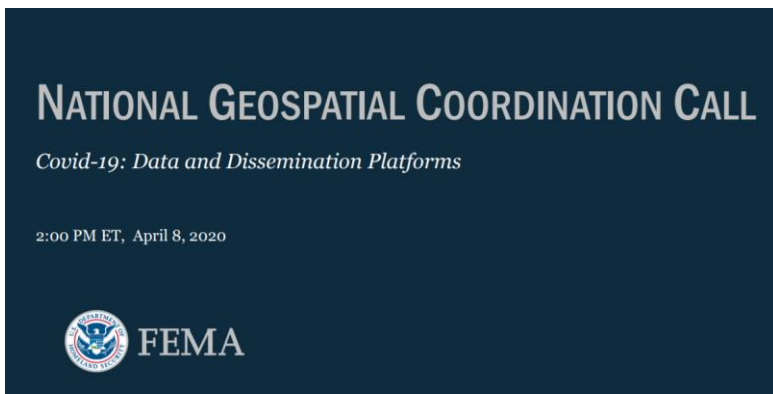
For ESRI Users:

If any support is needed related to COVID-19, go through the ESRI Disaster Response Program:

<https://www.esri.com/en-us/disaster-response/overview>

State Geographic Information Office:

FDOH, FDEM, and the GIO are participating in FEMA / CDC Geospatial briefings to coordinate Federal and State efforts. Please e-mail the GIO with any specific requests or questions. [Most recent weekly meeting slides \(large .pdf, may take a while to download and review\).](#)



A multi-state reference:

- 1. including Alabama and Georgia, from the National States Geographic Information Council (NSGIC): [Interactive Map](#)

COVID-19 STATE-LEVEL GEOSPATIAL RESOURCES

Use the interactive map below to access publicly available state-level GIS viewers and dashboards made available to support COVID-19 response. Additional state-level resources will be added to this map as they become available.

