

April 20, 2020

All content that has been added since the last version will have a green highlight within each section.

Please share this reference document as needed.

- [Click here](#) if you would like to be added to the distribution list to receive future updates.
- We expect to send out new updates each Monday afternoon, or as new resources become available.
- This document will be saved on the GIO web site. FloridaGIO.GOV
- This resource will not contain vendor-specific links. Please contact your vendors for any resources they may be providing for the geospatial community's COVID-19 response.

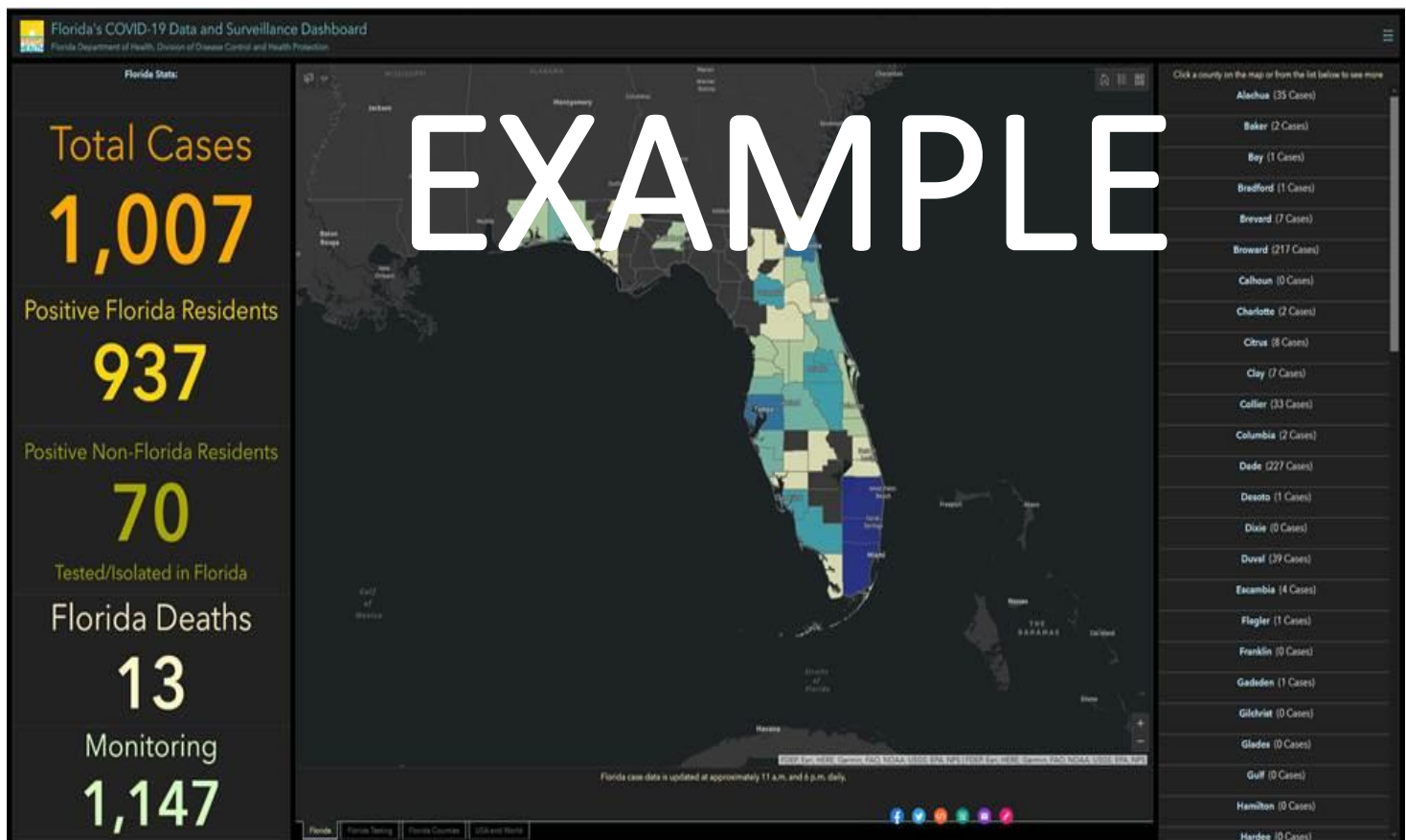
Florida Department of Health (DOH):

1. Due to the large volume of COVID-19 related spatial data shared by FDOH, we want to provide a detailed reference beyond this Florida overview. We are asking interested users to register for a more in-depth [FDOH e-mail here](#). The DOH GIS Manager maintains a Data Users Listserv for the data published through DOH for the event. Participants to the list serve will receive information including data, schema, and other changes to the data sources.
2. Special note to University research partners: Please email [Nikole Kikuchi](#) about data agreements for accessing Merlin data for research.
3. [Rebekah Jones](#), GIS Manager
Florida Department of Health
Division of Disease Control and Health Protection
O: 850-245-4389 E: Rebekah.Jones@FLHealth.gov
4. Here's the "approved" text we send out to data users inquiring about using the data, and the appropriate links:
 - a. **Accessing county and case-line level data:**

The Florida Department of Health publishes two feature services that are available for public use. These two layers are the only official and authoritative data counts published by the Department of Health.

- The case-line data for Florida can be accessed as a hosted table:
https://services1.arcgis.com/CY1LXxl9zIJeBuRZ/arcgis/rest/services/Florida_COVID19_Case_Line_Data/FeatureServer
<https://fdoh.maps.arcgis.com/home/item.html?id=f5d69a918fb747019734d9a90cd602f4#overview>
- The map feature service layer can be accessed here:
<https://fdoh.maps.arcgis.com/home/item.html?id=a7887f1940b34bf5a02c6f7f27a5cb2c>

- b. **We ask that you use the short link** to our application built in Experience Builder, as we've configured it to auto-detect the type of device used to access the data and re-route the user to the appropriate dashboard layout based on the user's device. The short link is: <https://arcg.is/0Hfi5O>
 - c. **Additionally, you can create a scaled version** of our application to embed into your own native environment by clicking the "<>" embed code at the bottom of the dashboard (inexperience builder – desktop only).
 - d. **Please credit the Florida Department of Health - GIS Office** with any representation of the map or dashboard.
5. Landing page: <https://floridahealthcovid19.gov/>
 6. [Dashboard](#)

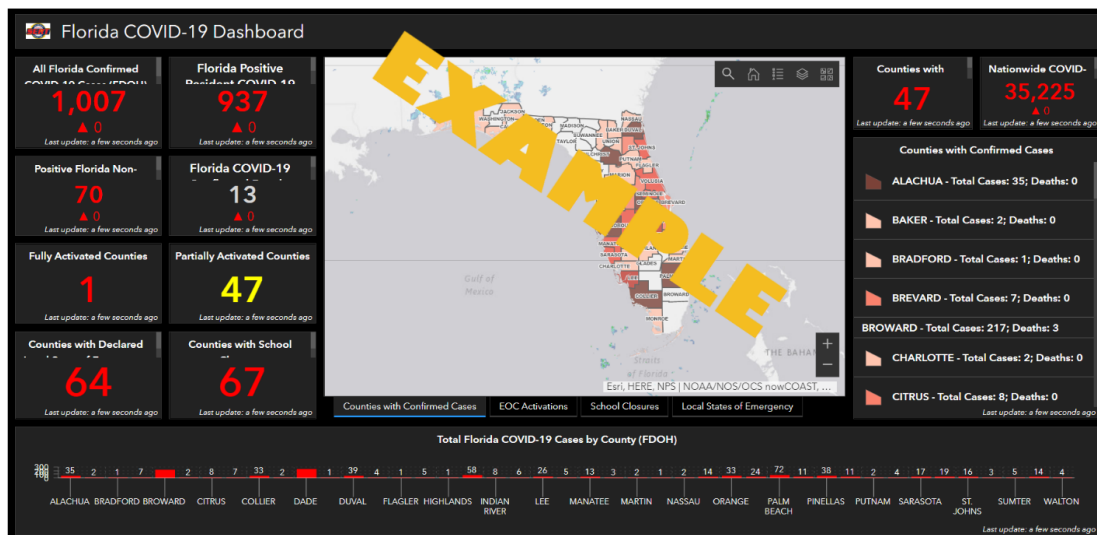


From the Florida Division of Emergency Management (DEM):

1. Florida Healthcare Capacity Dashboard - <https://arcg.is/1zn9e9>

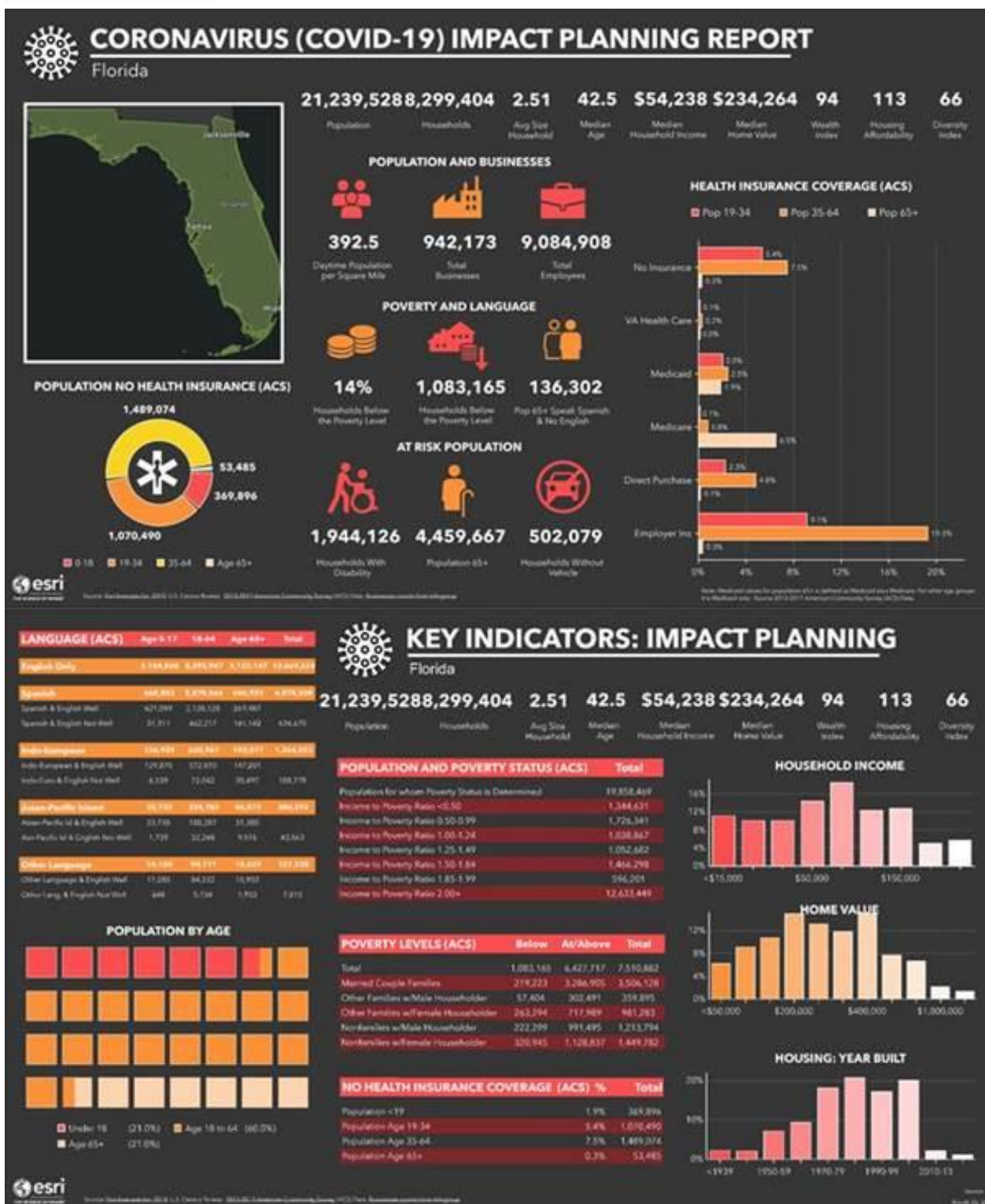


1. ESRI CHIME Model v. 1.1.1.1 - <https://www.arcgis.com/home/item.html?id=37ad6eb0d1034cd58844314a9b305de2>
2. ESRI CHIME Model Introduction Video - <https://www.youtube.com/watch?v=hMa5XPCjDDE>
3. FDEM Florida COVID-19 Dashboard - <https://arcg.is/0jPnWW>



4. FDEM COVID-19 Info Page - <https://www.floridadisaster.org/covid19>
5. Florida COVID-19 Planning Reports – <https://maps.floridadisaster.org/covid19/>
For additional planning products to help support your response to COVID-19, FDEM GIS has created Statewide and individual County planning report infographics that include information on demographics, at risk populations counts, poverty and language counts/percentages, health care insurance coverage counts, business/employee counts, and additional economic key indicators. This data is sourced from [Esri](#) forecasts for 2019, , information from the [2013-2017 American Community Survey](#) (ACS), and Businesses counts from [Infogroup](#). Each State and County includes a report in both a PDF and HTML file. The HTML file provides the ability to interact with the report to drill down on additional information contained within each element of the report.

Sample Planning Report: (next page)





Covid-19 Florida Geospatial Resources

FDACS

<https://fdacs.gov/covid19>

FDOT

<https://www.fdot.gov/agencyresources/emergency.shtm>

FDEP

[All State Parks closing 3/23/20](#)

South Florida WMD Response

<https://www.sfwmd.gov/> (updated URL)

Southwest Florida WMD Response

<https://www.swfwmd.state.fl.us/about/covid-19-update>

St Johns River WMD Response

<https://www.sjrwm.com/>

Suwannee River WMD Response

<http://www.mysuwanneeriver.com/CivicAlerts.aspx?AID=714>

Northwest Florida WMD Response

<https://www.nfwater.com/Contact-Us/Newsroom/Press-Releases/COVID-19-update-District-to-close-reservation-campsites-developed-recreation-areas>

Events:

<https://www.floridagio.gov/pages/florida-gis-community>

If you wish to share updates on the status of your GIS Community events, please [e-mail](#)

FloridaGIO@FloridaDEP.GOV

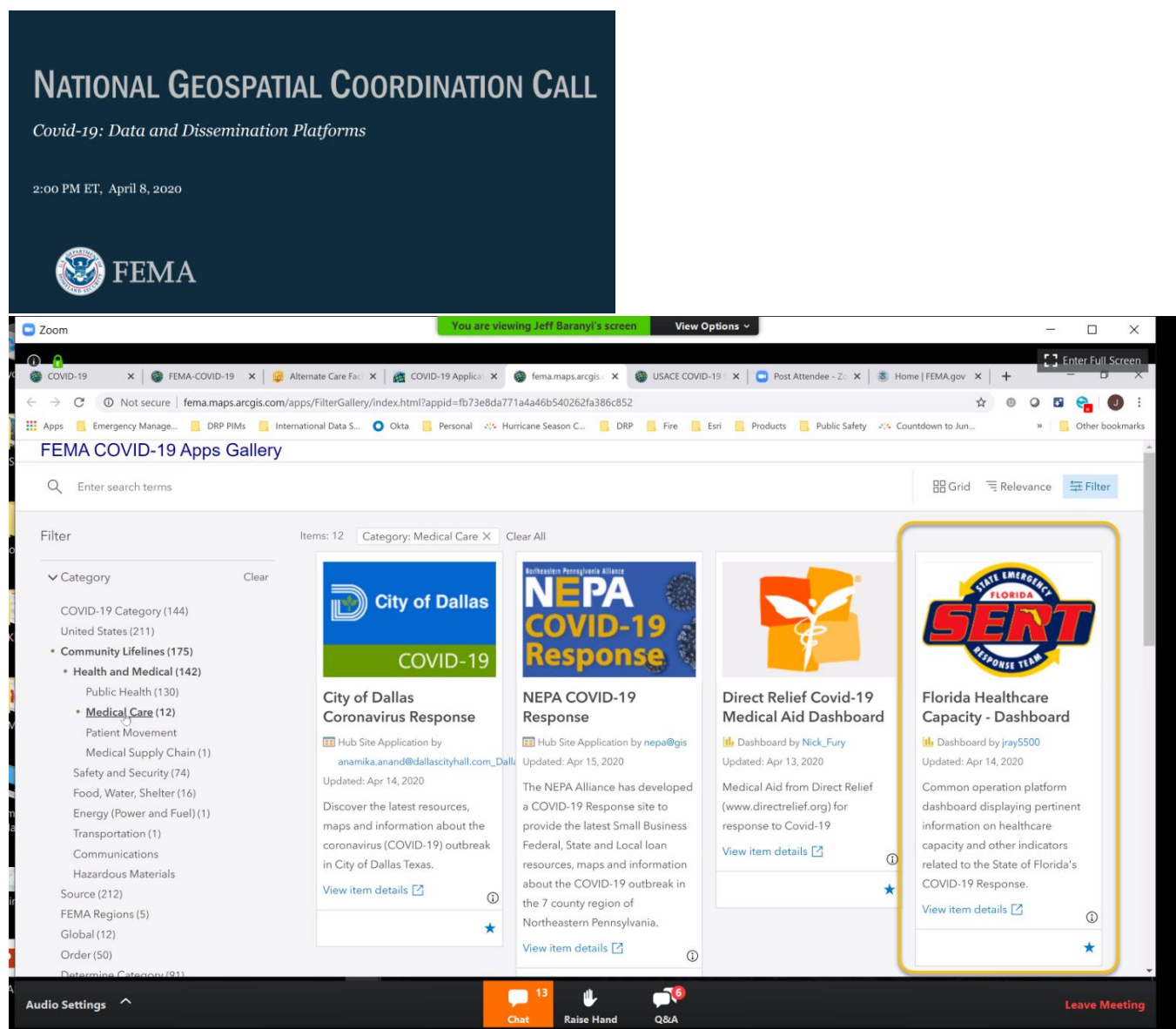
For ESRI Users:

If any support is needed related to COVID-19, go through the ESRI Disaster Response Program:

<https://www.esri.com/en-us/disaster-response/overview>

State Geographic Information Office:

FDOH, FDEM, and the GIO are participating in FEMA / CDC Geospatial briefings to coordinate Federal and State efforts. Please e-mail the GIO with any specific requests or questions. We are sharing the most recent weekly meeting slides (large .pdf, may take a while to download and review). **From the April 15th call.**



The screenshot shows a Zoom meeting interface. The top portion displays a presentation slide titled "NATIONAL GEOSPATIAL COORDINATION CALL" with the subtitle "Covid-19: Data and Dissemination Platforms". The slide indicates the time is 2:00 PM ET, April 8, 2020, and features the FEMA logo.

The bottom portion of the screen shows a web browser window displaying the "FEMA COVID-19 Apps Gallery". The browser's address bar shows the URL: fema.maps.arcgis.com/apps/FilterGallery/index.html?appid=fb73e8da771a4a46b540262fa386c852. The gallery shows a list of items, with the "Florida Healthcare Capacity - Dashboard" item highlighted by a yellow box. Other visible items include "City of Dallas Coronavirus Response", "NEPA COVID-19 Response", and "Direct Relief Covid-19 Medical Aid Dashboard".

A multi-state reference:

1. including Alabama and Georgia, from the National States Geographic Information Council (NSGIC):
[Interactive Map](#)

COVID-19 STATE-LEVEL GEOSPATIAL RESOURCES

Use the interactive map below to access publicly available state-level GIS viewers and dashboards made available to support COVID-19 response. Additional state-level resources will be added to this map as they become available.

