

April 27, 2020

All content that has been added since the last version will have a green highlight within each section.

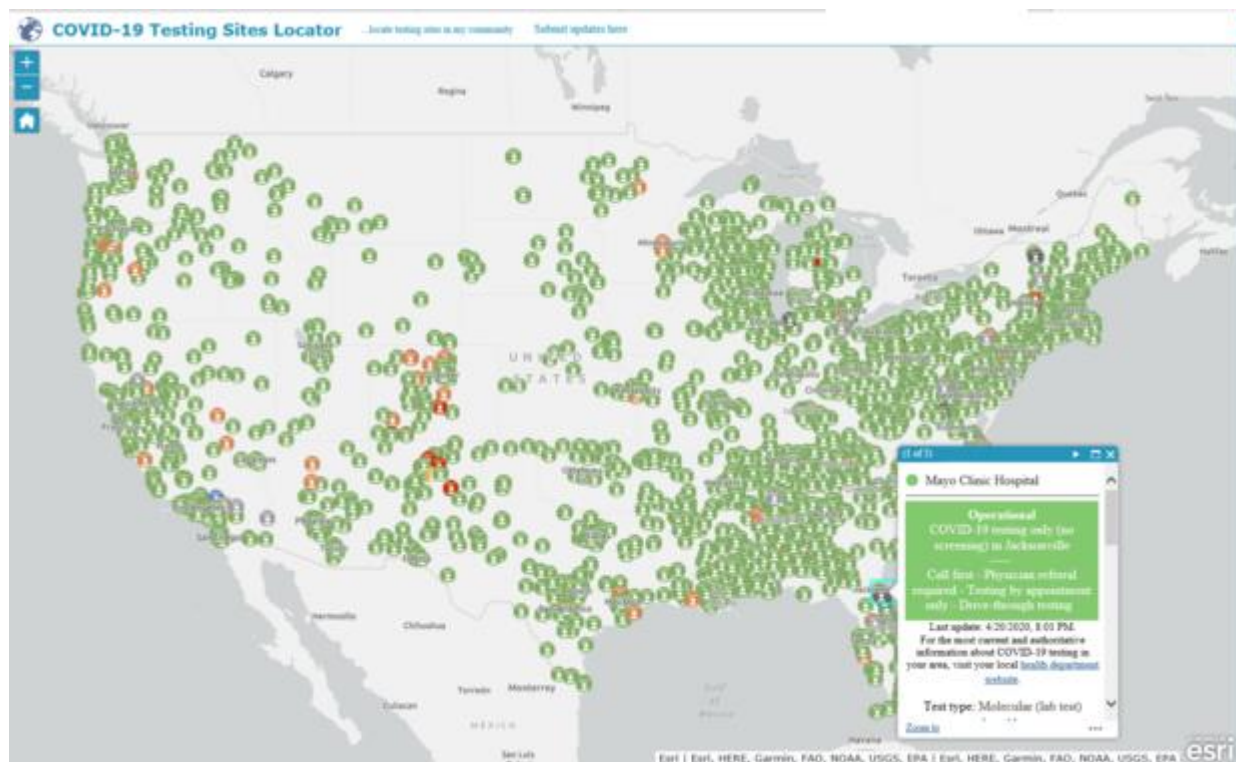
Please share this reference document as needed.

- [Click here](#) if you would like to be added to the distribution list to receive future updates.
- We expect to send out new updates each Monday afternoon, or as new resources become available.
- This document will be saved on the GIO web site. FloridaGIO.GOV
- This resource will not contain vendor-specific links. Please contact your vendors for any resources they may be providing for the geospatial community's COVID-19 response.

FEMA

The **FEMA COVID-19 Geospatial Resource Center** includes contributions from the geospatial community. By contributing you can help **reduce duplication of effort**, increase **collaboration** and provide **situational awareness** for decision-makers at every level of government. So, please share!

Today, we highlight a **Testing Sites Locator Map**, which is a contribution from GISCorps, a volunteer organization of GIS professionals and qualified data analysts.



How Did They Collect the Data?

Over 500 GISCorps volunteers compiled this nation-wide database of COVID-19 testing site locations. The data includes sites administered by local agencies and healthcare facilities.

The team used [Survey123](#) to ask health departments, local governments and healthcare facilities for information on their testing sites. To further expand the data set, they also include sites

publicized through official channels, such as the websites of health departments. To keep the content up to date, volunteers work daily to review submissions, verify accuracy against official websites and add new locations.

GISCorps collaborated with Coders Against COVID, who contributed physician-vetted data developed through their own crowdsourcing site, [findcovidtesting.com](#).

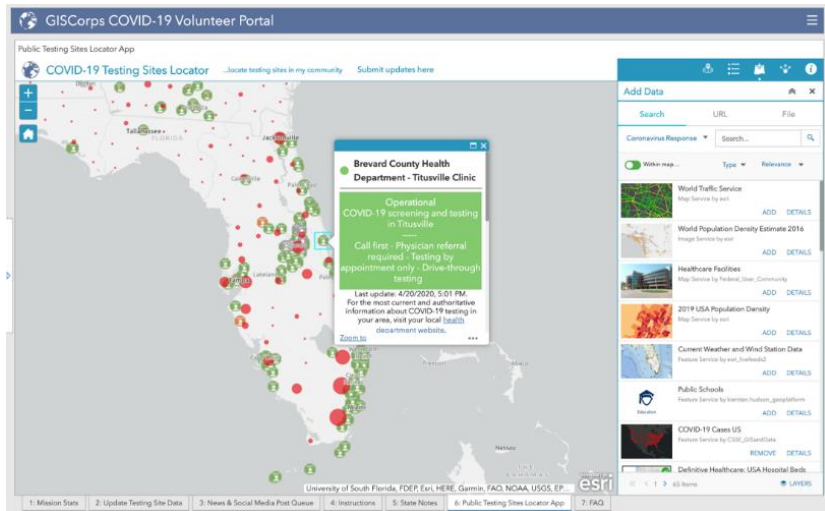
Is the Data Public?

Anyone can use the [Testing Sites Locator](#) to find sites in their community.



Users can search for an address or place, set the distance to search, and click a location on the map or from a list of results. The map includes status (e.g. operational, closed), address, whether a referral is required, operational hours, driving directions, facility website, and date of last update.

A public data layer is available as an [ArcGIS REST service](#) or a [JSON file](#) for GIS analysts.



Florida Department of Health (DOH):

1. Updates to the data and visualization tools will now be done once daily at 11:00 am to allow additional resources to be focused on analysis.
2. Due to the large volume of COVID-19 related spatial data shared by FDOH, we want to provide a detailed reference beyond this Florida overview. We are asking interested users to register for a more in-depth [FDOH e-mail here](#). The DOH GIS Manager maintains a Data Users Listserv for the data published through DOH for the event. Participants to the list serve will receive information including data, schema, and other changes to the data sources.
3. Special note to University research partners: Please email [Nikole Kikuchi](#) about data agreements for accessing Merlin data for research.
4. [Rebekah Jones](#), GIS Manager
Florida Department of Health
Division of Disease Control and Health Protection
O: 850-245-4389 E: Rebekah.Jones@FLHealth.gov
5. Here's the "approved" text we send out to data users inquiring about using the data, and the appropriate links:
 - a. **Accessing county and case-line level data:**

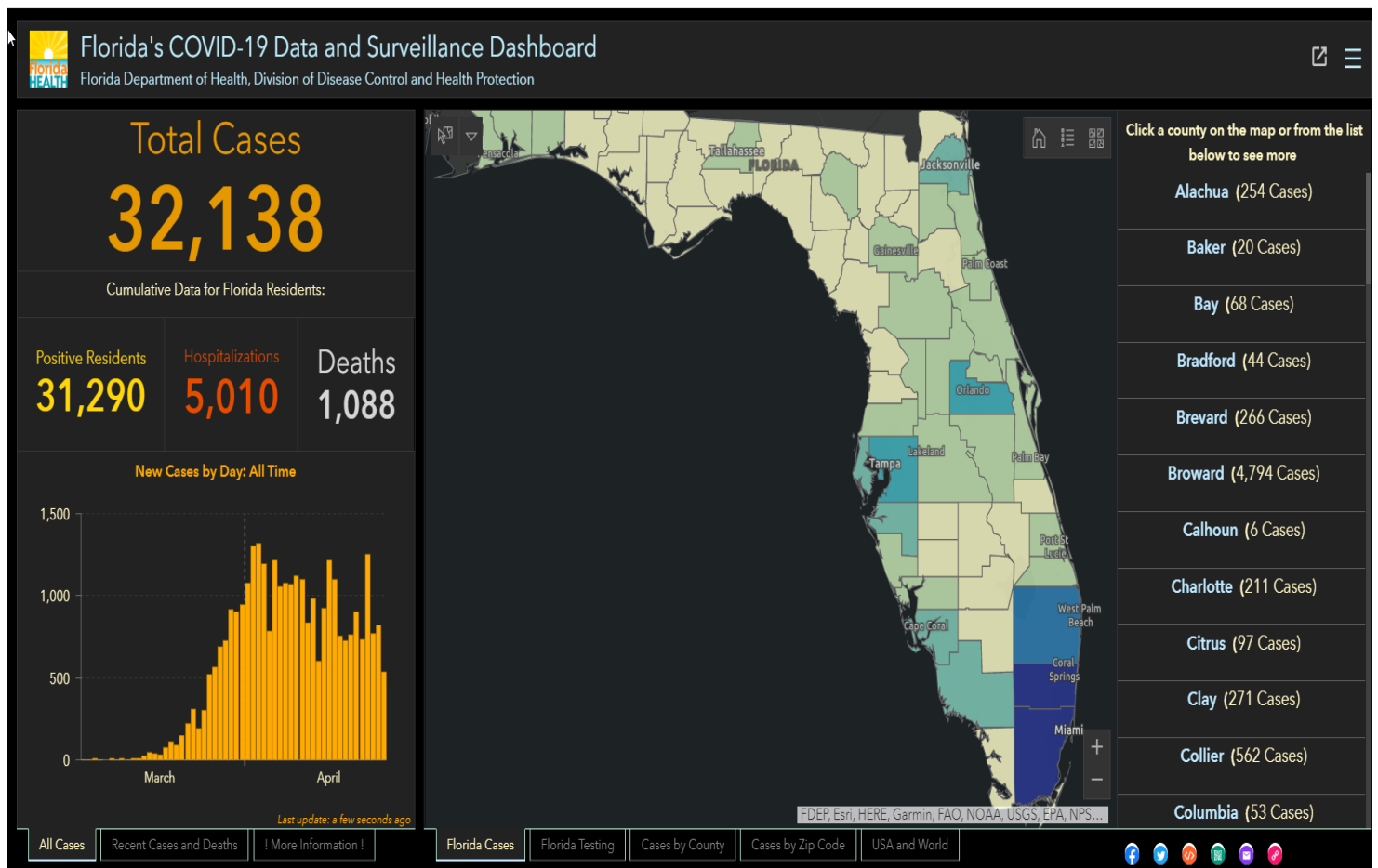
The Florida Department of Health publishes two feature services that are available for public use. These two layers are the only official and authoritative data counts published by the Department of Health.

 - The case-line data for Florida can be accessed as a hosted table:
https://services1.arcgis.com/CY1LXxl9zlJeBuRZ/arcgis/rest/services/Florida_COVID19_Case_Line_Data/FeatureServer
<https://fdoh.maps.arcgis.com/home/item.html?id=f5d69a918fb747019734d9a90cd602f4#overview>
 - The map feature service layer can be accessed here:
<https://fdoh.maps.arcgis.com/home/item.html?id=a7887f1940b34bf5a02c6f7f27a5cb2c>
 - b. **We ask that you use the short link** to our application built in Experience Builder, as we've configured it to auto-detect the type of device used to access the data and re-route the user to the appropriate dashboard layout based on the user's device. The short link is: <https://arcg.is/0Hfi5O>

- c. **Additionally, you can create a scaled version** of our application to embed into your own native environment by clicking the “<>” embed code at the bottom of the dashboard (inexperience builder – desktop only).
- d. **Please credit the Florida Department of Health - GIS Office** with any representation of the map or dashboard.

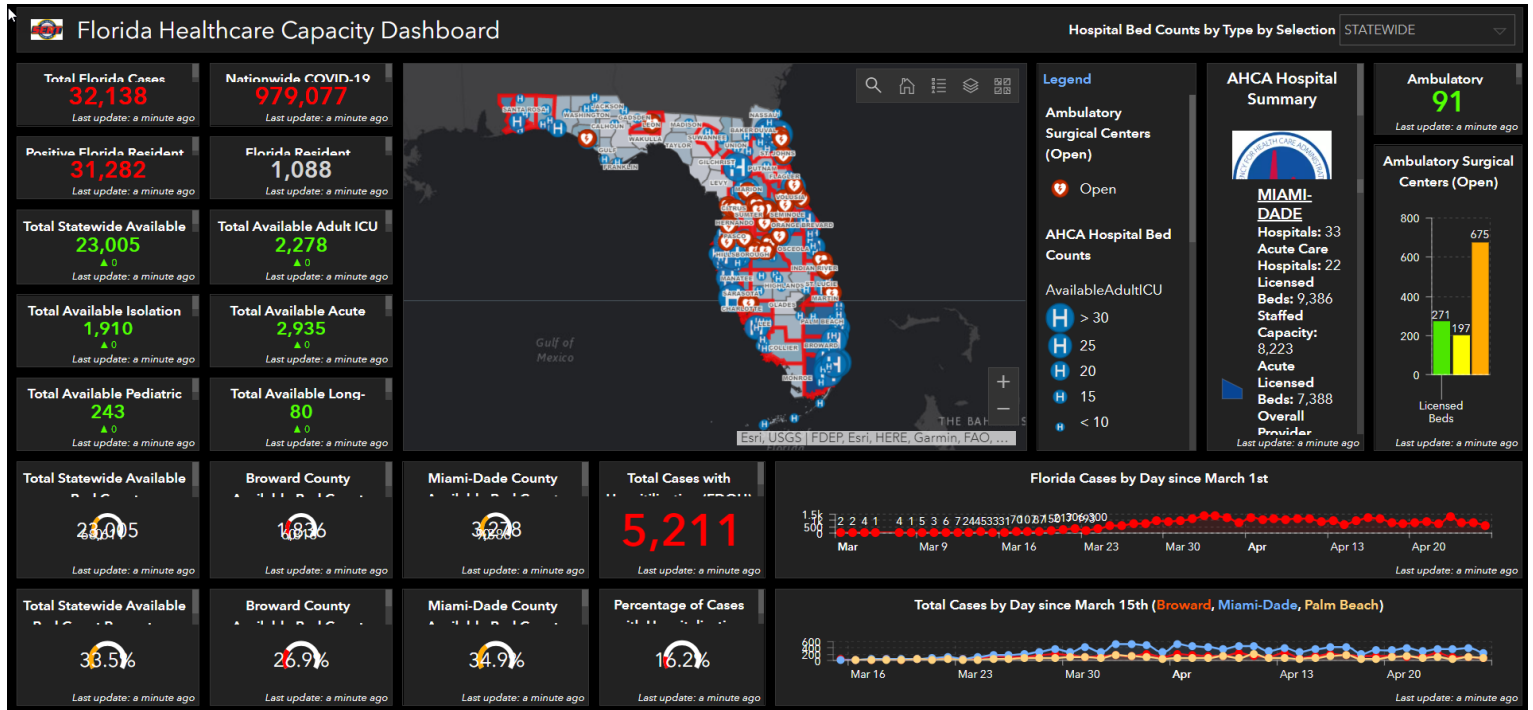
6. Landing page: <https://floridahealthcovid19.gov/>

7. [Dashboard](#)



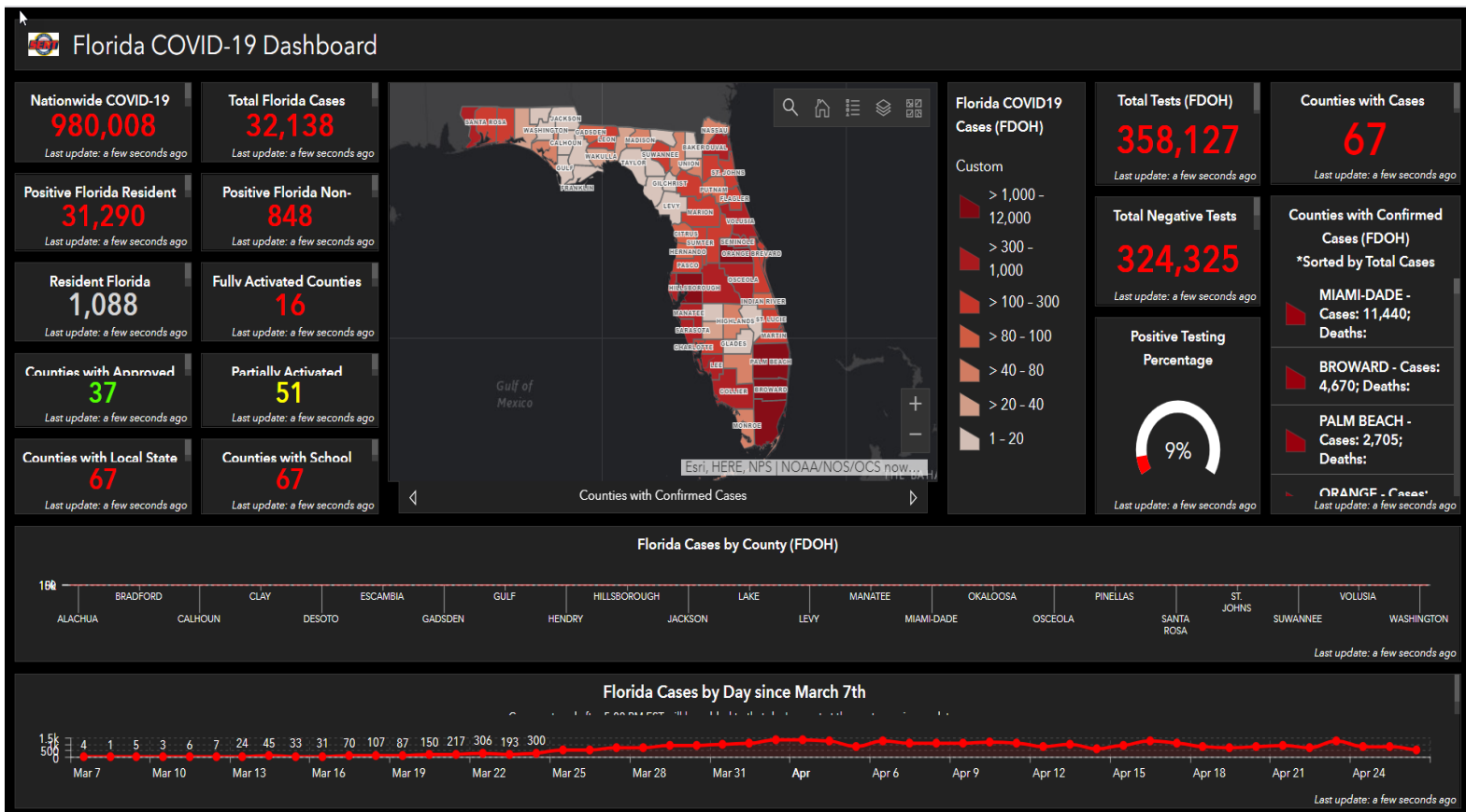
Florida Division of Emergency Management (DEM):

1. Florida Healthcare Capacity Dashboard - <https://arcg.is/1zn9e9>



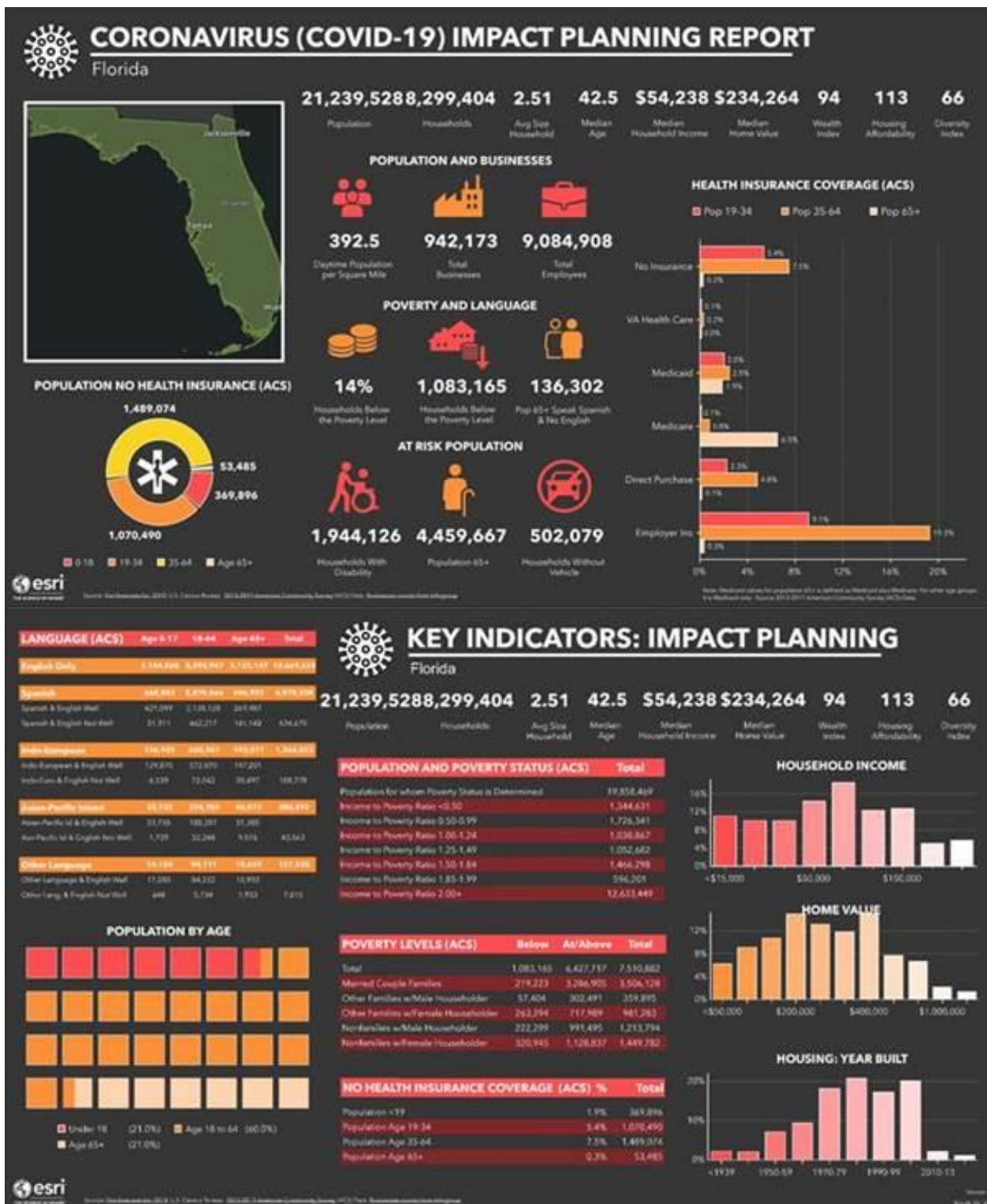
2. ESRI CHIME Model Introduction Video - <https://www.youtube.com/watch?v=hMa5XPCiDDE>

3. FDEM Florida COVID-19 Dashboard - <https://arcg.is/0jPnWW>



4. FDEM COVID-19 Info Page - <https://www.floridadisaster.org/covid19>
5. Florida COVID-19 Planning Reports – <https://maps.floridadisaster.org/covid19/>
For additional planning products to help support your response to COVID-19, FDEM GIS has created Statewide and individual County planning report infographics that include information on demographics, at risk populations counts, poverty and language counts/percentages, health care insurance coverage counts, business/employee counts, and additional economic key indicators. This data is sourced from [Esri](#) forecasts for 2019, , information from the [2013-2017 American Community Survey](#) (ACS), and Businesses counts from [Infogroup](#). Each State and County includes a report in both a PDF and HTML file. The HTML file provides the ability to interact with the report to drill down on additional information contained within each element of the report.

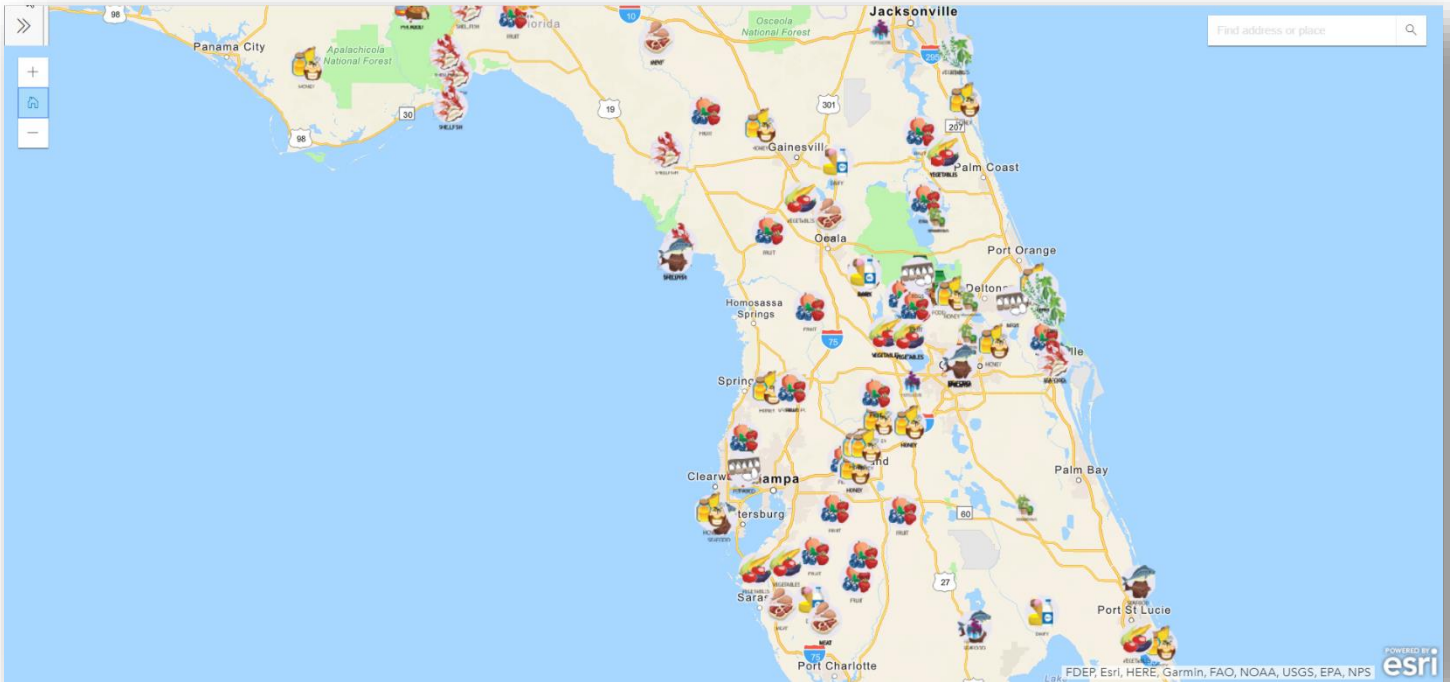
Sample Planning Report: (next page)



FDACS

1. <http://fdacs.gov/floridafarmtowgo>

We have a Grower Commodity Map where growers are posting excess commodities that they have to sell. Anyone can use the commodity map (not specifically for businesses).



2. <https://fdacs.gov/covid19>

FDOT

<https://www.fdot.gov/agencyresources/emergency.shtm>

FDEP

[All State Parks closing 3/23/20](#)

South Florida WMD Response

<https://www.sfwmd.gov/> (updated URL)

Southwest Florida WMD Response

<https://www.swfwmd.state.fl.us/about/covid-19-update>

St Johns River WMD Response

<https://www.sjrwmd.com/>

Suwannee River WMD Response

<http://www.mysuwanneeriver.com/CivicAlerts.aspx?AID=714>

Northwest Florida WMD Response

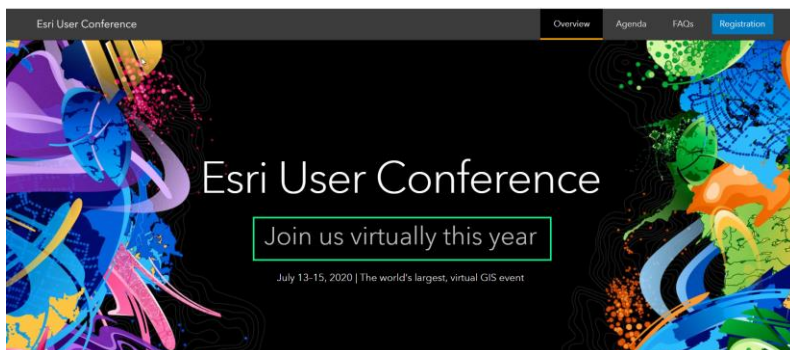
<https://www.nwfwater.com/Contact-Us/Newsroom/Press-Releases/COVID-19-update-District-to-close-reservation-campsites-developed-recreation-areas>

Events:

<https://www.floridagio.gov/pages/florida-gis-community> If you wish to share updates on the status of your GIS Community events, please [e-mail](mailto:FloridaGIO@FloridaDEP.GOV) FloridaGIO@FloridaDEP.GOV

For ESRI Users:

- If any support is needed related to COVID-19, go through the ESRI Disaster Response Program:
<https://www.esri.com/en-us/disaster-response/overview>



State Geographic Information Office:

FDOH, FDEM, and the GIO are participating in FEMA / CDC Geospatial briefings to coordinate Federal and State efforts. Please e-mail the GIO with any specific requests or questions. We are sharing the most recent weekly meeting slides (large .pdf, may take a while to download and review). **From the April 22nd call** **Featuring GIS Best Practices from the Florida Dept. of Health**



Florida Best Practices: Applying Lessons Learned from Hurricanes to COVID-19

- Florida Department of Health, Emergency Management, and GIO have a long history of working together during hurricanes
- Coordinate with the counties through ArcGIS Online Groups, FGIO Updates, Covid-19 Geospatial Resources e-mails, conference calls, etc.
- Actively guard against duplicating any data, functionality, or efforts
- <https://www.floridagio.gov/>

DOH Best Practices: Data Sharing and Transparency

- Data Definitions and Terms documents direct to public and data users
- DOH "COVID-19" Data Users email group for schema changes and data updates
- Cooperation and positive interaction with general public, media, researchers, universities, and more.
- No email goes unanswered!



Reminder about AGO item complete, clear, description details:

The screenshot shows an ArcGIS Online item page for a web mapping application. Several callout boxes highlight key elements:

- Good title:** Points to the title 'COVID19 Public Health Emergency Status by County Viewer'.
- Good thumbnail:** Points to the map thumbnail showing a red and yellow color-coded map of the United States.
- Concise summary:** Points to the description text: 'This application displays public health emergency restrictions related to COVID-19 for each county across the nation, using data collected from local authorities by local Red Cross staff and volunteers with region leadership approvals.'
- Good profile:** Points to the user profile of Greg Tune, NHQRedCrossGIS, which includes a bio, group membership, and item count (253).

Other visible details include the 'View Application' button, 'Details' section (Size: 28 KB, API: JavaScript, Purpose: Ready To Use), 'Share' options, 'Owner' (NHQRedCrossGIS), 'Tags' (COVID19, Counties, Public Health Emergency Status, Public Health, Emergency Status, nCoV), and 'Credits (Attribution)'.

A multi-state reference:

1. including Alabama and Georgia, from the National States Geographic Information Council (NSGIC):
[Interactive Map](#)

COVID-19 STATE-LEVEL GEOSPATIAL RESOURCES

Use the interactive map below to access publicly available state-level GIS viewers and dashboards made available to support COVID-19 response. Additional state-level resources will be added to this map as they become available.

