

May 04, 2020

All content that has been added since the last version will have a green highlight within each section.

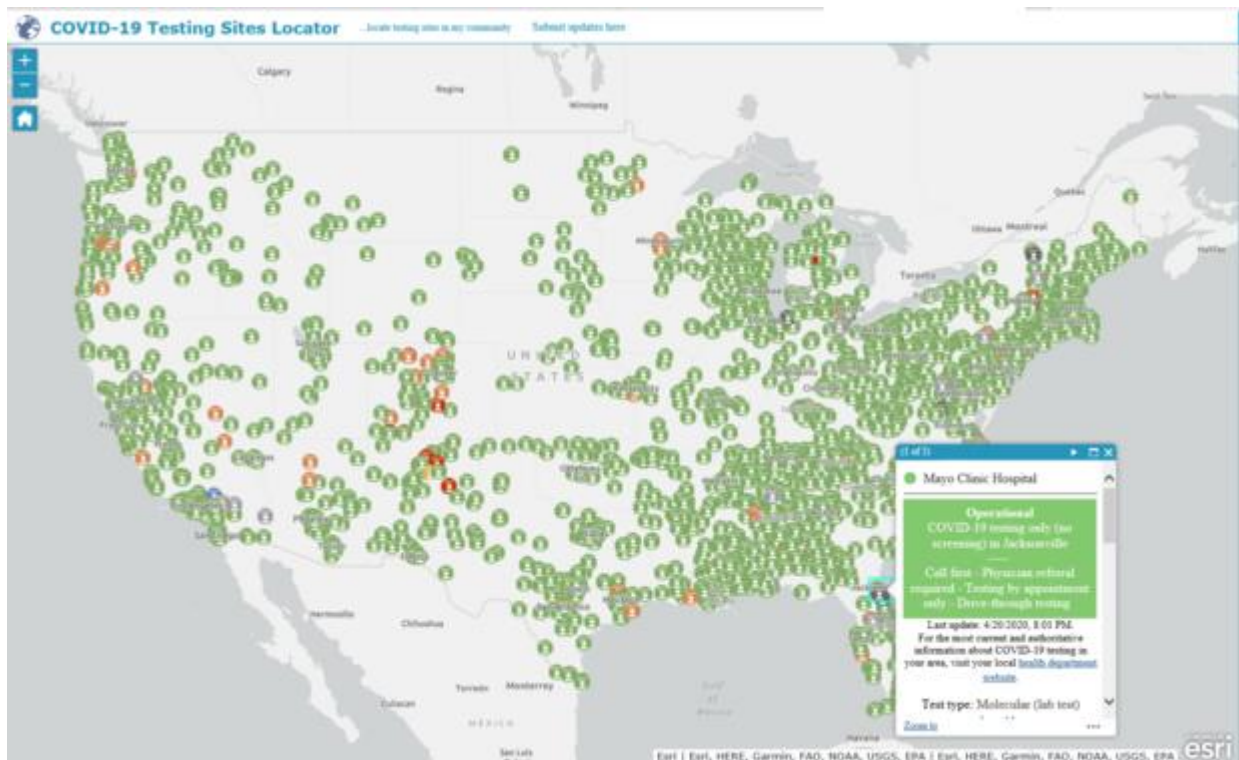
Please share this reference document as needed.

- [Click here](#) if you would like to be added to the distribution list to receive future updates.
- We expect to send out new updates each Monday afternoon, or as new resources become available.
- This document will be saved on the GIO web site. FloridaGIO.GOV
- This resource will not contain vendor-specific links. Please contact your vendors for any resources they may be providing for the geospatial community's COVID-19 response.

FEMA

The [FEMA COVID-19 Geospatial Resource Center](#) includes contributions from the geospatial community. By contributing you can help **reduce duplication of effort**, increase **collaboration** and provide **situational awareness** for decision-makers at every level of government. So, please share!

Today, we highlight a [Testing Sites Locator Map](#), which is a contribution from GISCorps, a volunteer organization of GIS professionals and qualified data analysts.



How Did They Collect the Data?

Over 500 GISCorps volunteers compiled this nation-wide database of COVID-19 testing site locations. The data includes sites administered by local agencies and healthcare facilities.

The team used [Survey123](#) to ask health departments, local governments and healthcare facilities for information on their testing sites. To further expand the data set, they also include sites

publicized through official channels, such as the websites of health departments. To keep the content up to date, volunteers work daily to review submissions, verify accuracy against official websites and add new locations.

GISCorps collaborated with Coders Against COVID, who contributed physician-vetted data developed through their own crowdsourcing site, [findcovidtesting.com](#).

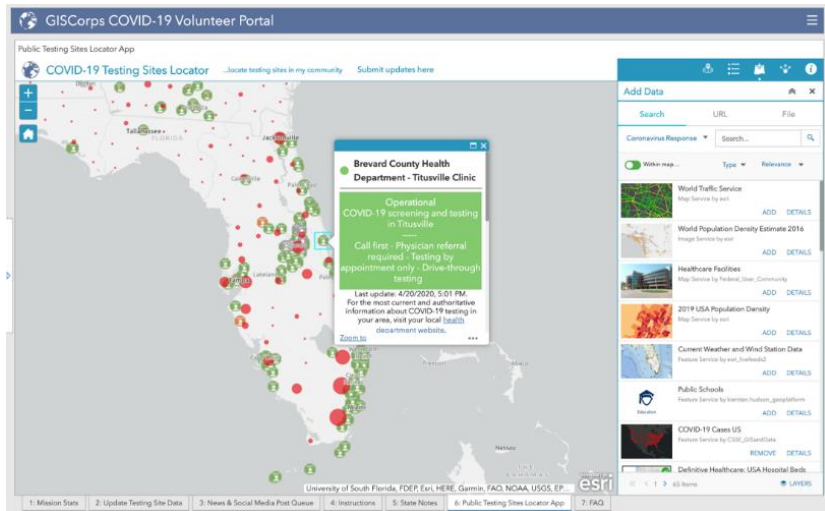
Is the Data Public?

Anyone can use the [Testing Sites Locator](#) to find sites in their community.



Users can search for an address or place, set the distance to search, and click a location on the map or from a list of results. The map includes status (e.g. operational, closed), address, whether a referral is required, operational hours, driving directions, facility website, and date of last update.

A public data layer is available as an [ArcGIS REST service](#) or a [JSON file](#) for GIS analysts.



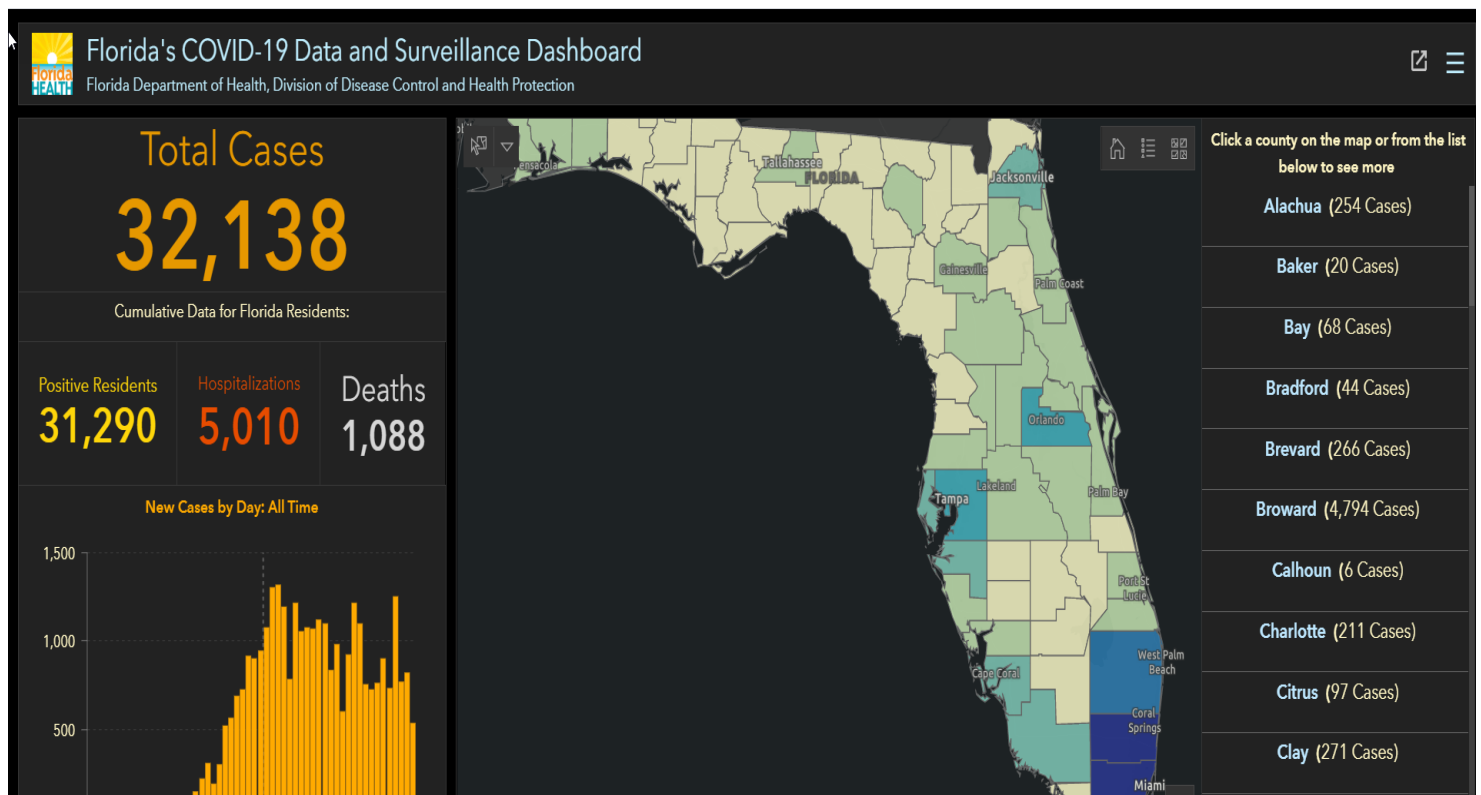
Florida Department of Health (DOH):

COVID-19 DATA USERS NOTICE – MAY 1, 2020

1. Continued issues with AGO feature services and HUB:
 - a. I've attached today's data again to help keep you guys current.
2. Issues with zip code data updates
 - a. I have fixed it across our system and there shouldn't be any more problems. Please let me know if you notice any issues.
3. Because of the issues with the hosted features and zip codes, I have not been able to complete the March data sheet for you guys just yet, but I am working on it. I also have not been able to finish the scripting for testing and cases by day for zips, but I've assigned it to someone who has more time to try to finish it up.
4. You guys get the early scoop on this one: I'm preparing a Spanish-language version of our dashboards (desktop, tablet and mobile) to launch this weekend. The original intent was to launch today, but because I haven't had the time to finish working on it, and because I want to run the translations by a vendor to ensure they're right (including the data definitions), this will have to be up in a few days.
5. We hit 100 million views last Sunday (04/26/20)! That's neat!
6. Data update schedule change: As mentioned in previous emails, we are now updating once daily, at or about 11:00 AM EDT (UTC-4).
7. Due to the large volume of COVID-19 related spatial data shared by FDOH, we want to provide a detailed reference beyond this Florida overview. We are asking interested users to register for a more in-depth [FDOH e-mail here](#). The DOH GIS Manager maintains a Data Users Listserv for the data published through DOH for the event. Participants to the list serve will receive information including data, schema, and other changes to the data sources.
 - a. Special note to University research partners: Please email [Nikole Kikuchi](#) about data agreements for accessing Merlin data for research.
 - b. [Rebekah Jones](#), GIS Manager
Florida Department of Health
Division of Disease Control and Health Protection
O: 850-245-4389 E: Rebekah.Jones@FLHealth.gov
 - c. Here's the "approved" text we send out to data users inquiring about using the data, and the appropriate links:
 - a. Accessing county and case-line level data:

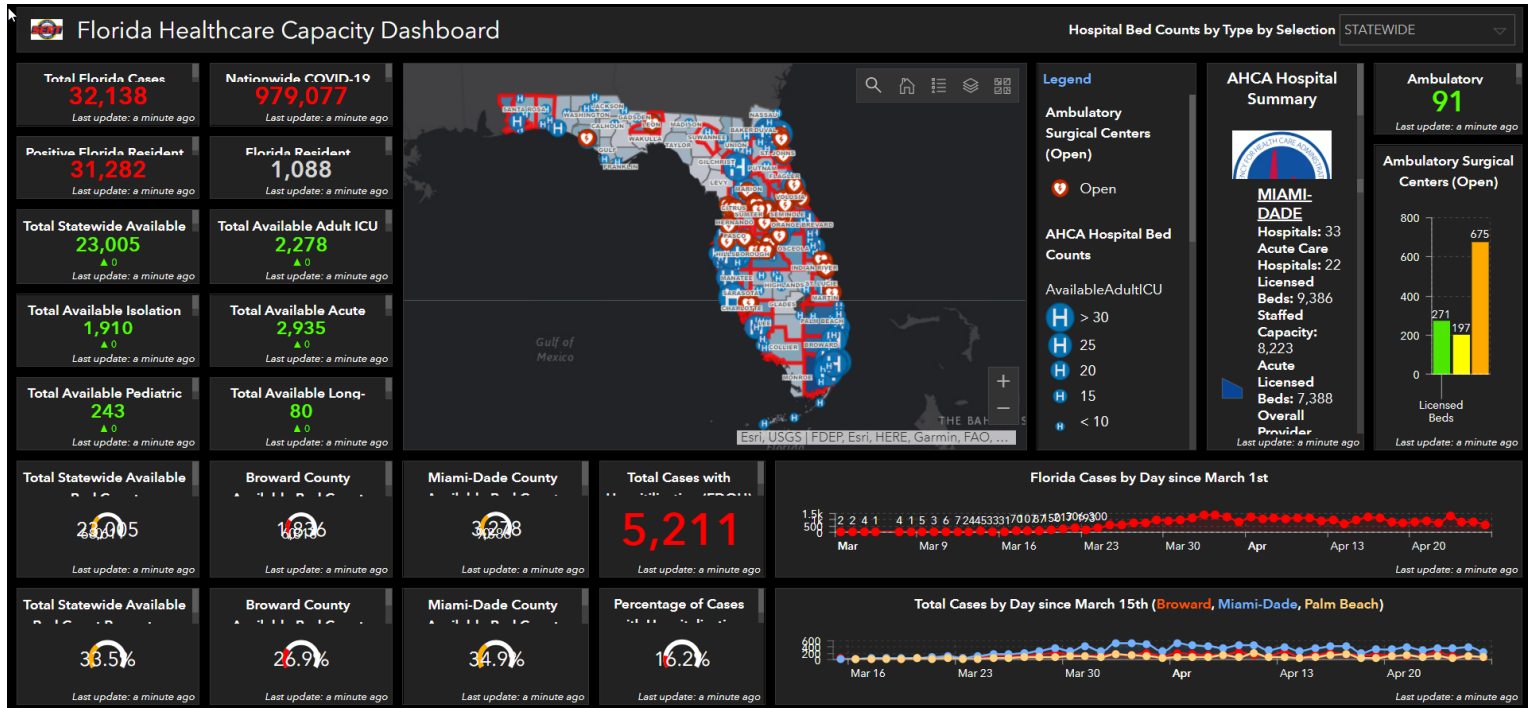
- d. The Florida Department of Health publishes two feature services that are available for public use. These two layers are the only official and authoritative data counts published by the Department of Health.
 - e. The case-line data for Florida can be accessed as a hosted table:
https://services1.arcgis.com/CY1LXl9zIJeBuRZ/arcgis/rest/services/Florida_COVID19_Case_Line_Data/FeatureServer
<https://fdoh.maps.arcgis.com/home/item.html?id=f5d69a918fb747019734d9a90cd602f4#overview>
 - f. The map feature service layer can be accessed here:
<https://fdoh.maps.arcgis.com/home/item.html?id=a7887f1940b34bf5a02c6f7f27a5cb2c>
8. **We ask that you use the short link** to our application built in Experience Builder, as we've configured it to auto-detect the type of device used to access the data and re-route the user to the appropriate dashboard layout based on the user's device. The short link is: <https://arcg.is/0Hfi5O>
- a. **Additionally, you can create a scaled version** of our application to embed into your own native environment by clicking the "<>" embed code at the bottom of the dashboard (inexperience builder – desktop only).
 - b. **Please credit the Florida Department of Health - GIS Office** with any representation of the map or dashboard.
9. Landing page: <https://floridahealthcovid19.gov/>

10. [Dashboard](#)



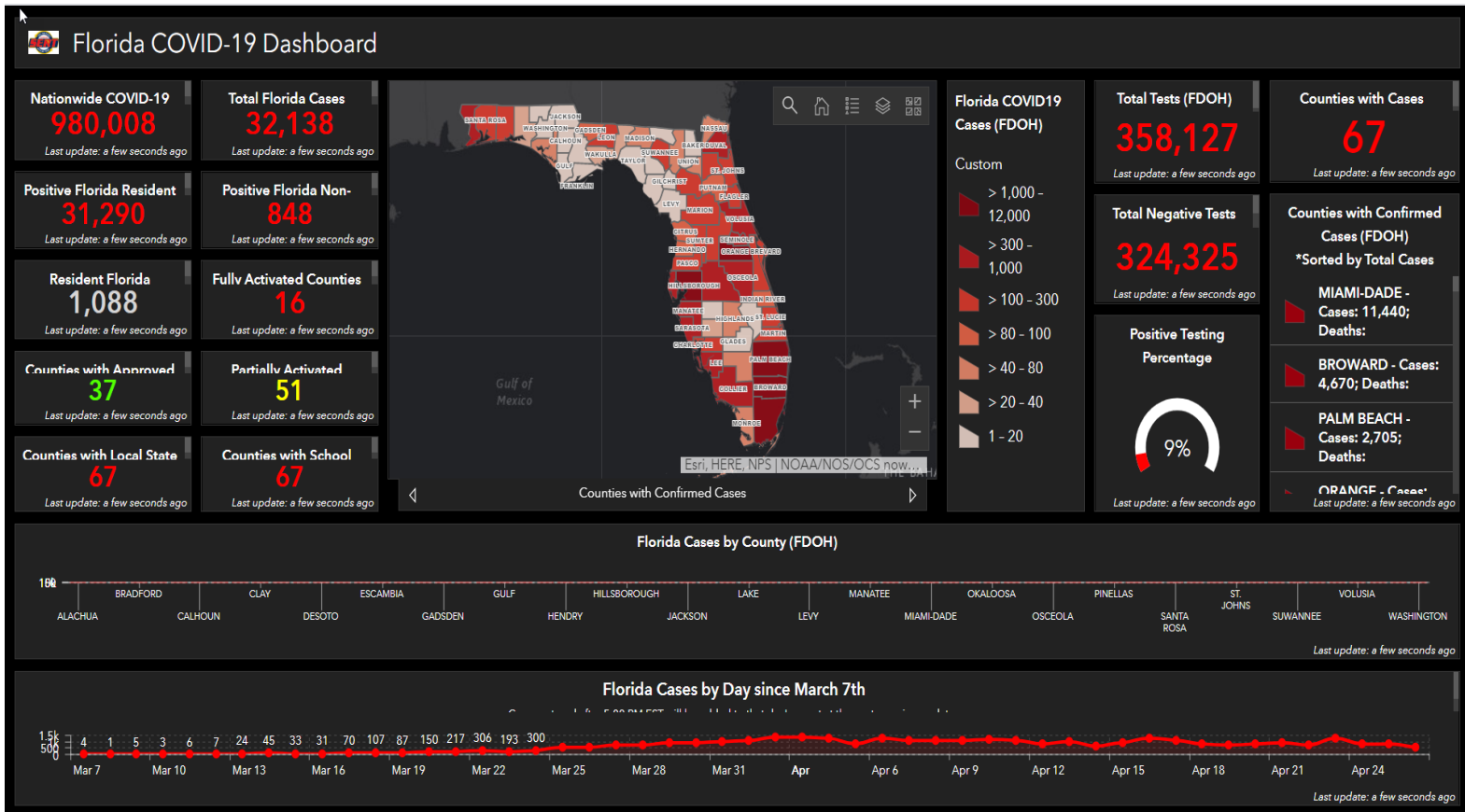
Florida Division of Emergency Management (DEM):

1. Florida Healthcare Capacity Dashboard - <https://arcg.is/1zn9e9>



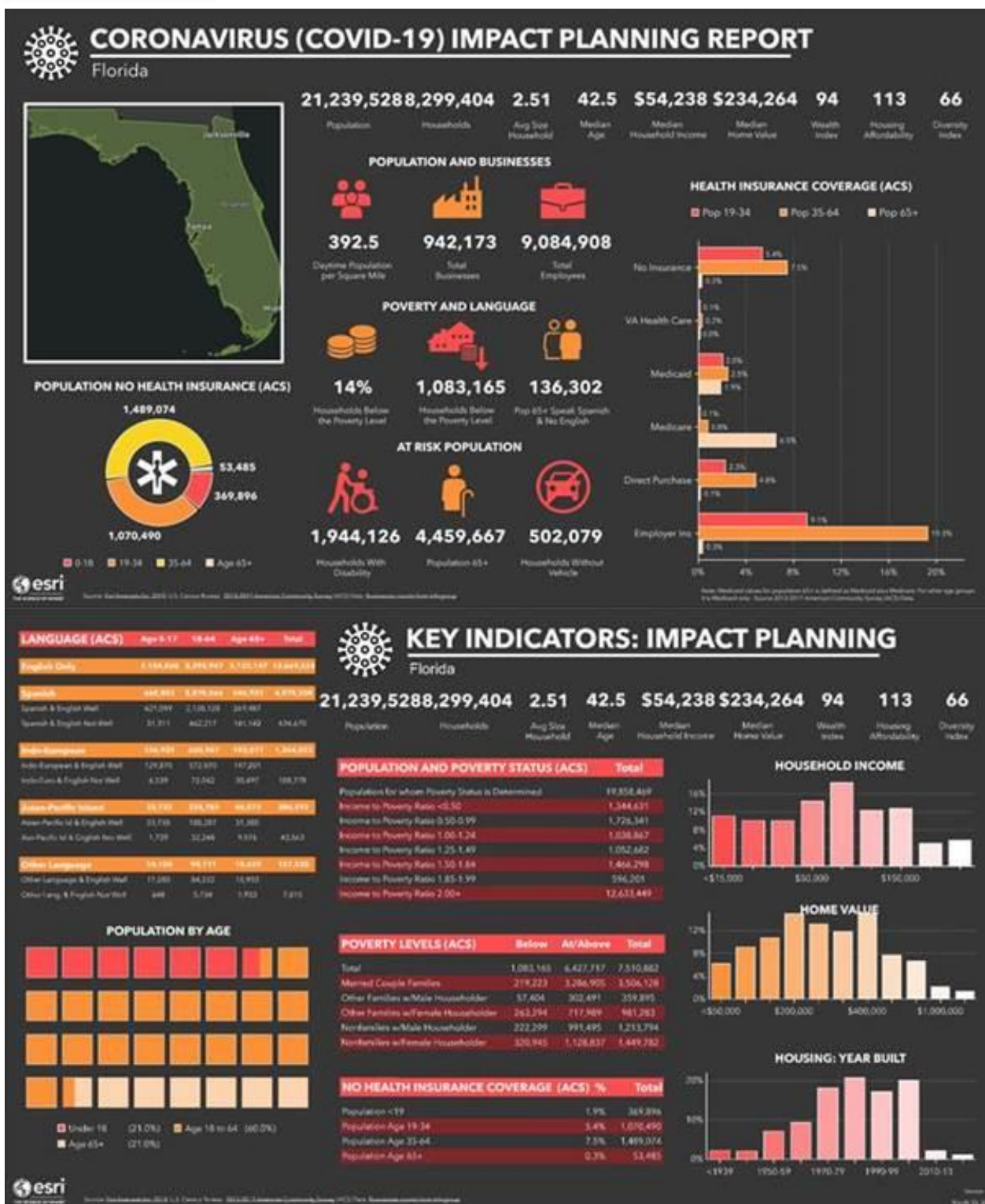
2. ESRI CHIME Model Introduction Video - <https://www.youtube.com/watch?v=hMa5XPCjDDE>

3. FDEM Florida COVID-19 Dashboard - <https://arcg.is/0jPnWW>



4. FDEM COVID-19 Info Page - <https://www.floridadisaster.org/covid19>
5. Florida COVID-19 Planning Reports – <https://maps.floridadisaster.org/covid19/>
 For additional planning products to help support your response to COVID-19, FDEM GIS has created Statewide and individual County planning report infographics that include information on demographics, at risk populations counts, poverty and language counts/percentages, health care insurance coverage counts, business/employee counts, and additional economic key indicators. This data is sourced from [Esri](#) forecasts for 2019, , information from the [2013-2017 American Community Survey](#) (ACS), and Businesses counts from [Infogroup](#). Each State and County includes a report in both a PDF and HTML file. The HTML file provides the ability to interact with the report to drill down on additional information contained within each element of the report.

Sample Planning Report: (next page)



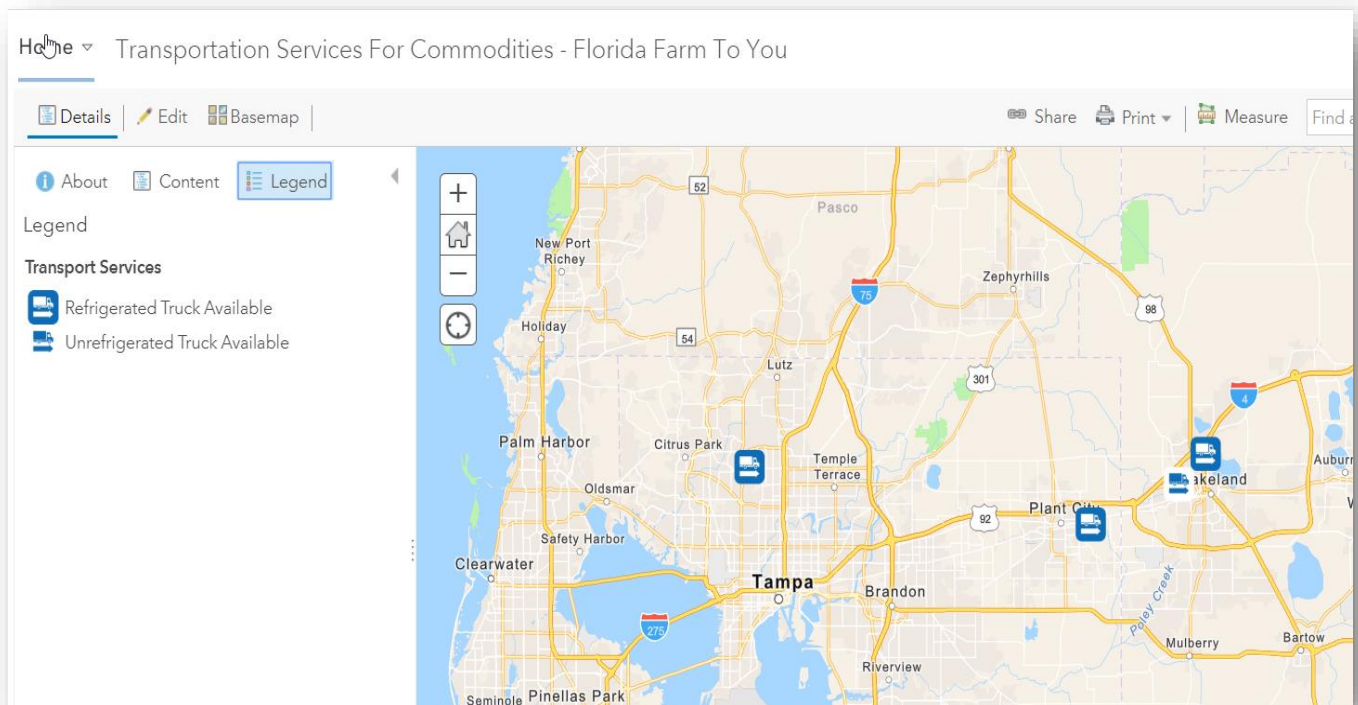
FDACS

1. This map displays transportation services that are available to move agricultural commodities as part of FDACS' Farm To You Program. The businesses shown here have voluntarily provided their business information. The link to the transportation services **map**:

<https://fdacs.maps.arcgis.com/home/webmap/viewer.html?webmap=f0683d0da7c547e58e1dc56b6cdc107f>

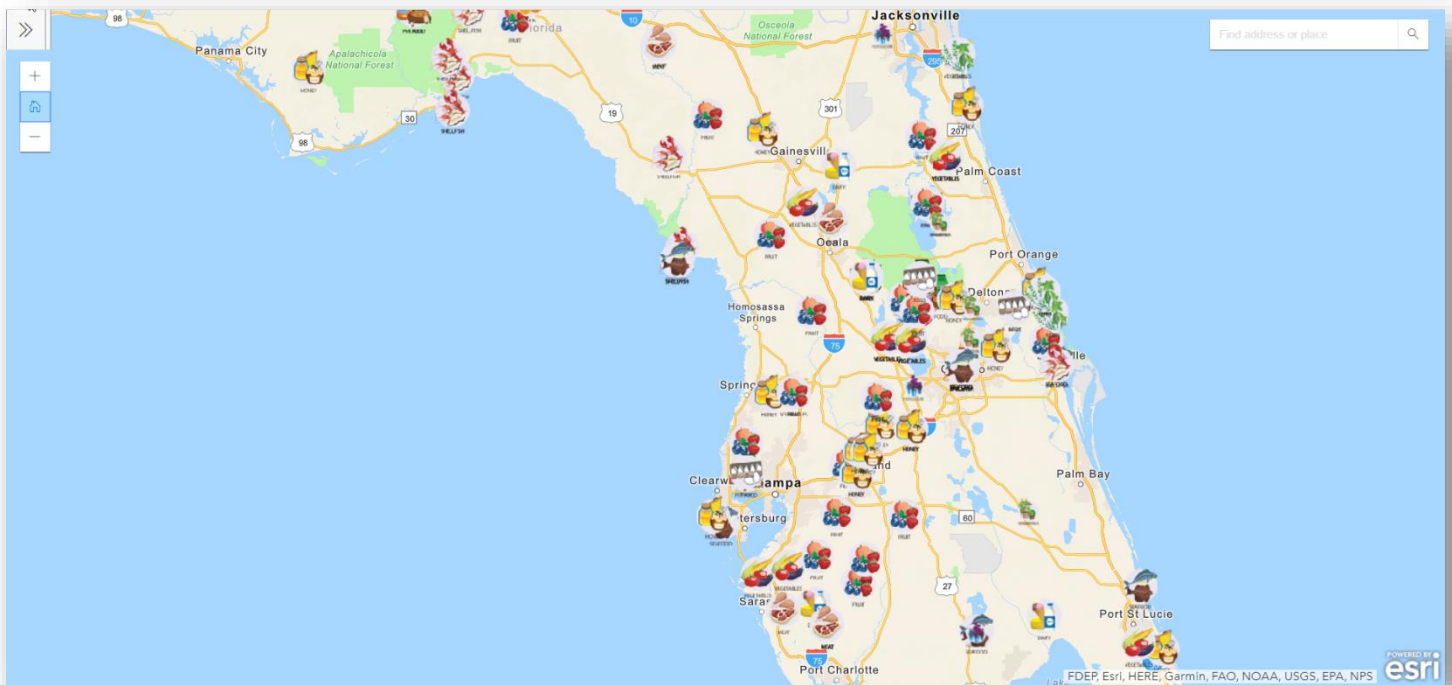
The link to the transportation **geoform** for transportation businesses to submit availability:

<https://fdacs.maps.arcgis.com/apps/GeoForm/index.html?appid=e99006bb52de437c9103b53a4a5270bf>



2. <http://fdacs.gov/floridafarmtoyou>

We have a Grower Commodity Map where growers are posting excess commodities that they have to sell. Anyone can use the commodity map (not specifically for businesses).



3. <https://fdacs.gov/covid19>

FDOT

<https://www.fdot.gov/agencyresources/emergency.shtm>

FDEP

[All State Parks closing 3/23/20](#)

South Florida WMD Response

<https://www.sfwmd.gov/> (updated URL)

Southwest Florida WMD Response

<https://www.swfwmd.state.fl.us/about/covid-19-update>

St Johns River WMD Response

<https://www.sjrwmd.com/>

Suwannee River WMD Response

<http://www.mysuwanneeriver.com/CivicAlerts.aspx?AID=714>

Northwest Florida WMD Response

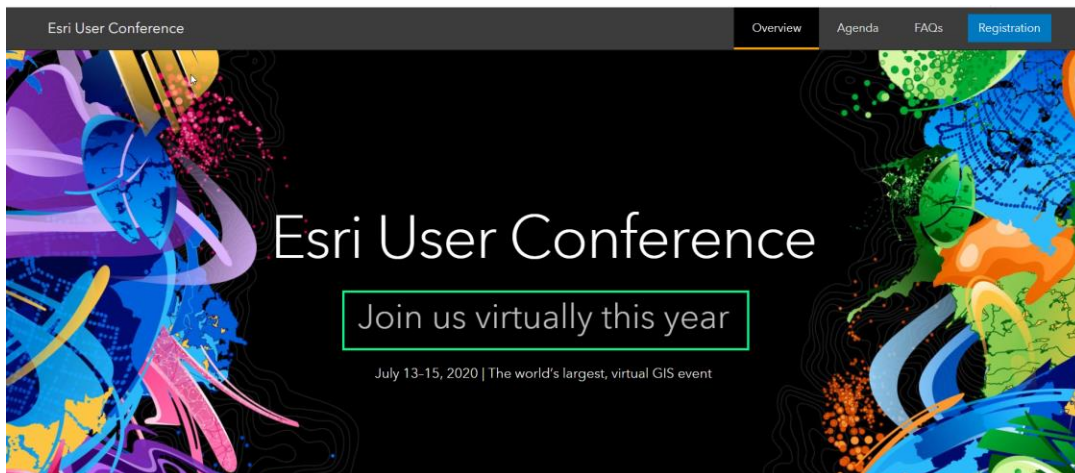
<https://www.nwfwater.com/Contact-Us/Newsroom/Press-Releases/COVID-19-update-District-to-close-reservation-campsites-developed-recreation-areas>

Events:


<https://www.floridagio.gov/pages/florida-gis-community> If you wish to share updates on the status of your GIS Community events, please [e-mail](mailto:FloridaGIO@FloridaDEP.GOV) FloridaGIO@FloridaDEP.GOV

For ESRI Users:


- If any support is needed related to COVID-19, go through the ESRI Disaster Response Program: <https://www.esri.com/en-us/disaster-response/overview>



- Training opportunities. [Register via this link](#) in the ESRI COVID-19 weekly newsletter:




WEBINARS & TRAINING



COVID-19 Training Resource Guide

This guide is an aid for GIS and health professionals who want to use authoritative Esri learning resources to understand the potential impact that COVID-19 can have on their organization and community.


Access Now



CHIME Model Introduction


In this video, Esri's Lauren Bennett demos an ArcGIS Pro toolbox that uses the University of Pennsylvania's COVID-19 Hospital Impact Model for Epidemics (CHIME).

Watch Now



May 13, 2020 | 9am - 10am (PDT)

Hear from industry experts on how Fire & EMS Agencies can use GIS to serve communities for pandemic response and recovery.



Learning Resources and Tools

This collection of learning resources and tools specific to COVID-19 that can help you ramp up your skills, knowledge, and best practices.

State Geographic Information Office:

FDOH, FDEM, and the GIO are participating in FEMA / CDC Geospatial briefings to coordinate Federal and State efforts. Please e-mail the GIO with any specific requests or questions. [From the April 22nd call](#) Featuring GIS Best Practices from the Florida Dept. of Health



Florida Best Practices: Applying Lessons Learned from Hurricanes to COVID-19

- Florida Department of Health, Emergency Management, and GIO have a long history of working together during hurricanes
- Coordinate with the counties through ArcGIS Online Groups, FGIO Updates, Covid-19 Geospatial Resources e-mails, conference calls, etc.
- Actively guard against duplicating any data, functionality, or efforts
- <https://www.floridagio.gov/>

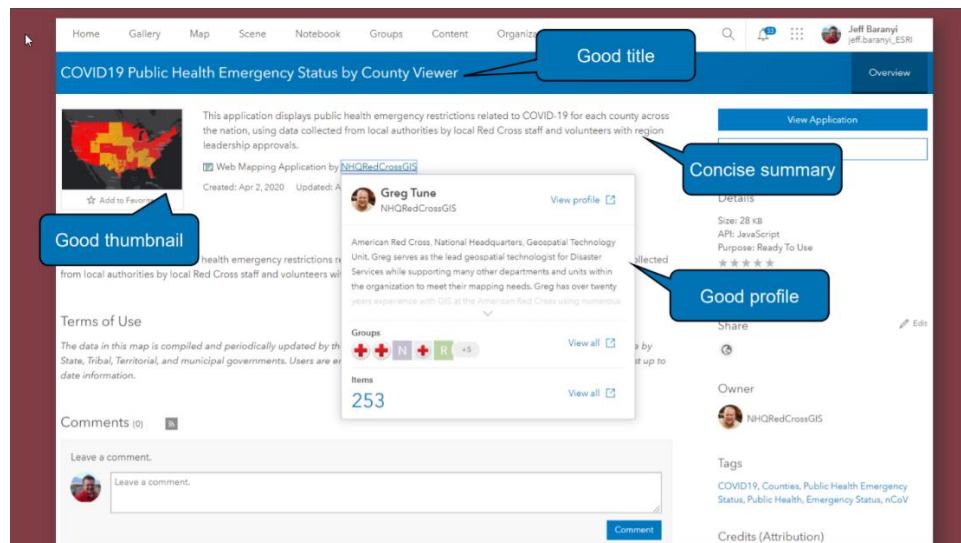
DOH Best Practices: Data Sharing and Transparency

- Data Definitions and Terms documents direct to public and data users
- DOH "COVID-19" Data Users email group for schema changes and data updates
- Cooperation and positive interaction with general public, media, researchers, universities, and more.
- No email goes unanswered!



Even in personal crises, remind yourself that disaster is a shared and community experience, and what you're doing matters to those directly impacted.

Reminder about AGO item complete, clear, description details:



A multi-state reference:

1. including Alabama and Georgia, from the National States Geographic Information Council (NSGIC): [Interactive Map](#)

COVID-19 STATE-LEVEL GEOSPATIAL RESOURCES

Use the interactive map below to access publicly available state-level GIS viewers and dashboards made available to support COVID-19 response. Additional state-level resources will be added to this map as they become available.

